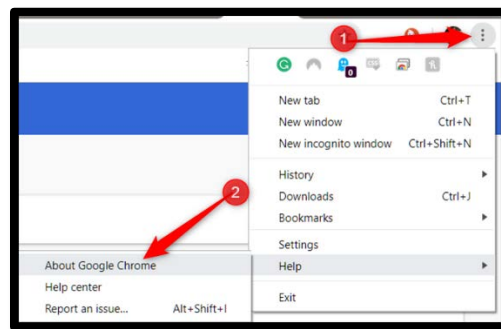


Google Chrome: How to Update Your Browser

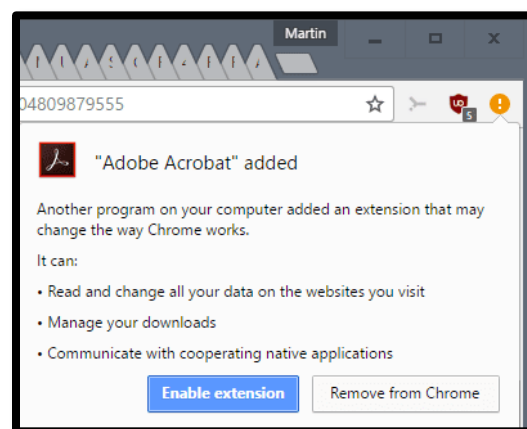
Note: This is only available at certain times of the year on Katy ISD-issued devices. So please be sure to do this in August. On personally owned devices, this can be done at any time.

Follow these steps to update your Google Chrome Browser

- Open your Google Chrome browser
- Click on the **menu** (three dots), then **Help**, then **About Google Chrome**. You can also type **chrome://settings/help** into Chrome's location box and press Enter.



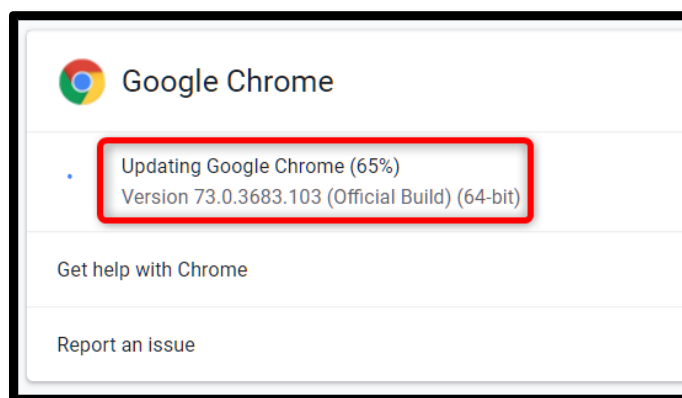
- Note: If you don't see the 3 dots and see a yellow circle with an exclamation mark, install the extensions that are needed and then you will see the 3 dots.



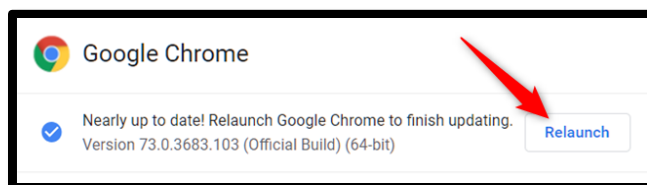
- Chrome will check for any updates and immediately download them as soon as you open the About Google Chrome page.

Google Chrome: How to Update Your Browser

- If Chrome has already downloaded and is waiting to install an update, the menu icon will change to an up arrow and take on one of three colors, depending on how long the update has been available:
 - Green: An update has been available for two days
 - Orange: An update has been available for four days
 - Red: An update has been available for seven days



- After the update has installed - or if it's been waiting for a few days - click **Relaunch** to finish the update process.



- **Warning:** Make sure you save anything you're working on. Chrome reopens the tabs that were open before the relaunch but doesn't save any of the data contained in them.
- If you'd rather wait to restart Chrome and finish up the work you're doing, just close the tab. Chrome will install the update the next time you close and reopen it.

Google Chrome: How to Update Your Browser

- When you relaunch Chrome, and the update finally finishes installing, head back to **chrome://settings/help** and verify you're running the latest version of Chrome. Chrome will say "Google Chrome is up to date" if you've already installed the latest updates.

