

***Long Range Facilities Planning
Process Update:
Public Input***

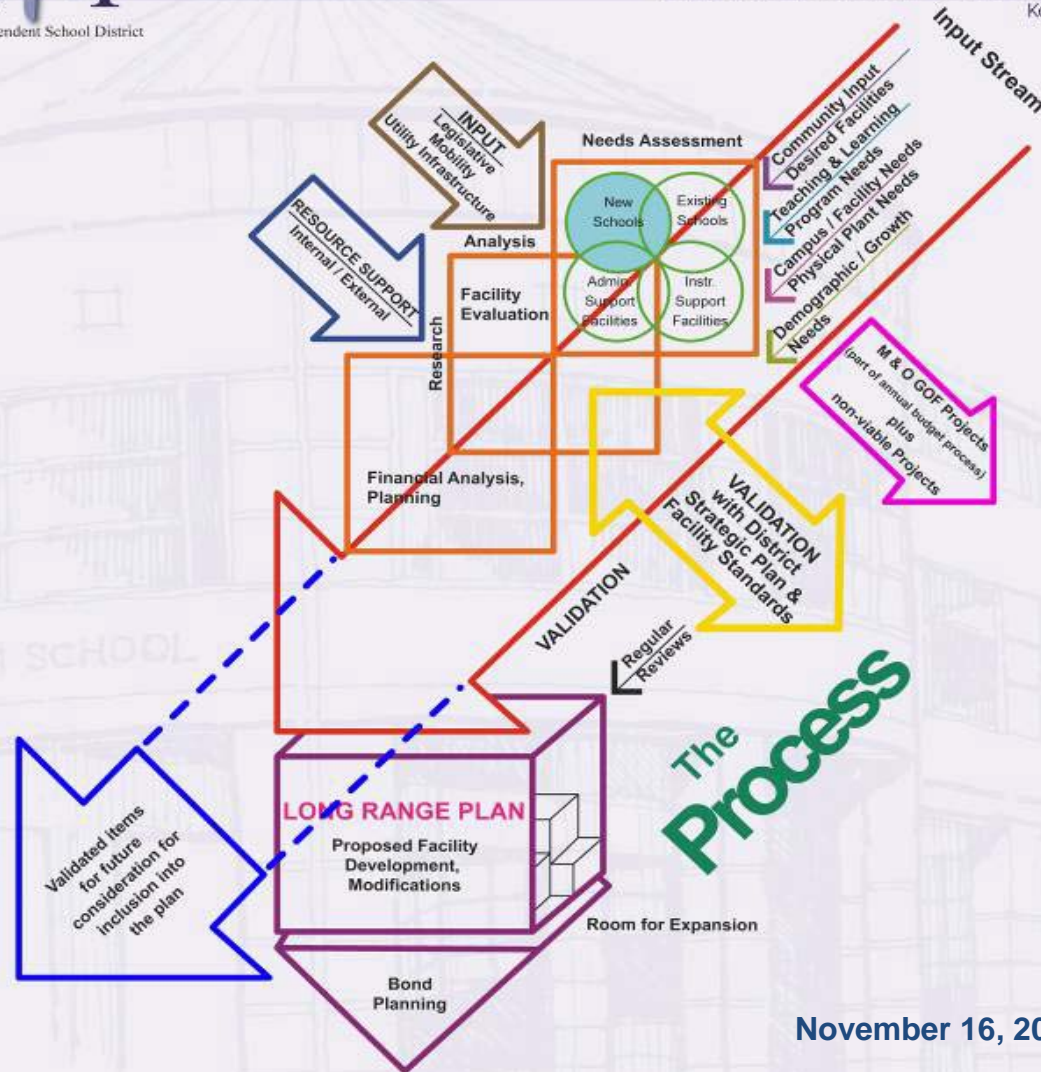
***Board Work Study
January 20, 2010***

Long Range Facilities Planning Process Update



Long Range Facilities Planning

Katy Independent School District
Katy, Texas



November 16, 2009

Long Range Facilities Planning Process Update

1. Completed Tasks

- ✓ 1999 – Initial Long Range Facility Plan covering District Planning through 2009
- ✓ 2002 – Second Long Range Facility Plan completed covering District Planning through 2012
- ✓ 2006 - Third Long Range Facility Plan completed covering District Planning through 2016
- ✓ Through the use of survey questionnaires and on-site facility reviews, a 2008 – 2009 detailed district-wide needs assessment was compiled subsequently followed by a line-by-line review by Department Heads and Maintenance & Operations Supervisors
- ✓ Each campus was visited to confirm items requested and to discuss prioritization of need
- ✓ The review of existing school designs was commenced to determine possible enhancements and refinements to support sustainability
- ✓ The future new schools/major additions and property requirements were confirmed as information from the demographers was received
- ✓ Wolfe School replacement update was presented to Board of Trustees September 21, 2009
- ✓ PASA Demographic Update was presented to the Administration on October 16, 2009
- ✓ Public Workshops for Long Range Facility Plan Input were held on December 3 and December 10, 2009
- ✓ Design firm selection for Wolfe Elementary replacement project was approved by the Board at the December 14, 2009, Board meeting
- ✓ Online facilities and growth feedback from community at large was received from December 3, 2009, until January 4, 2010

Long Range Facilities Planning Process Update

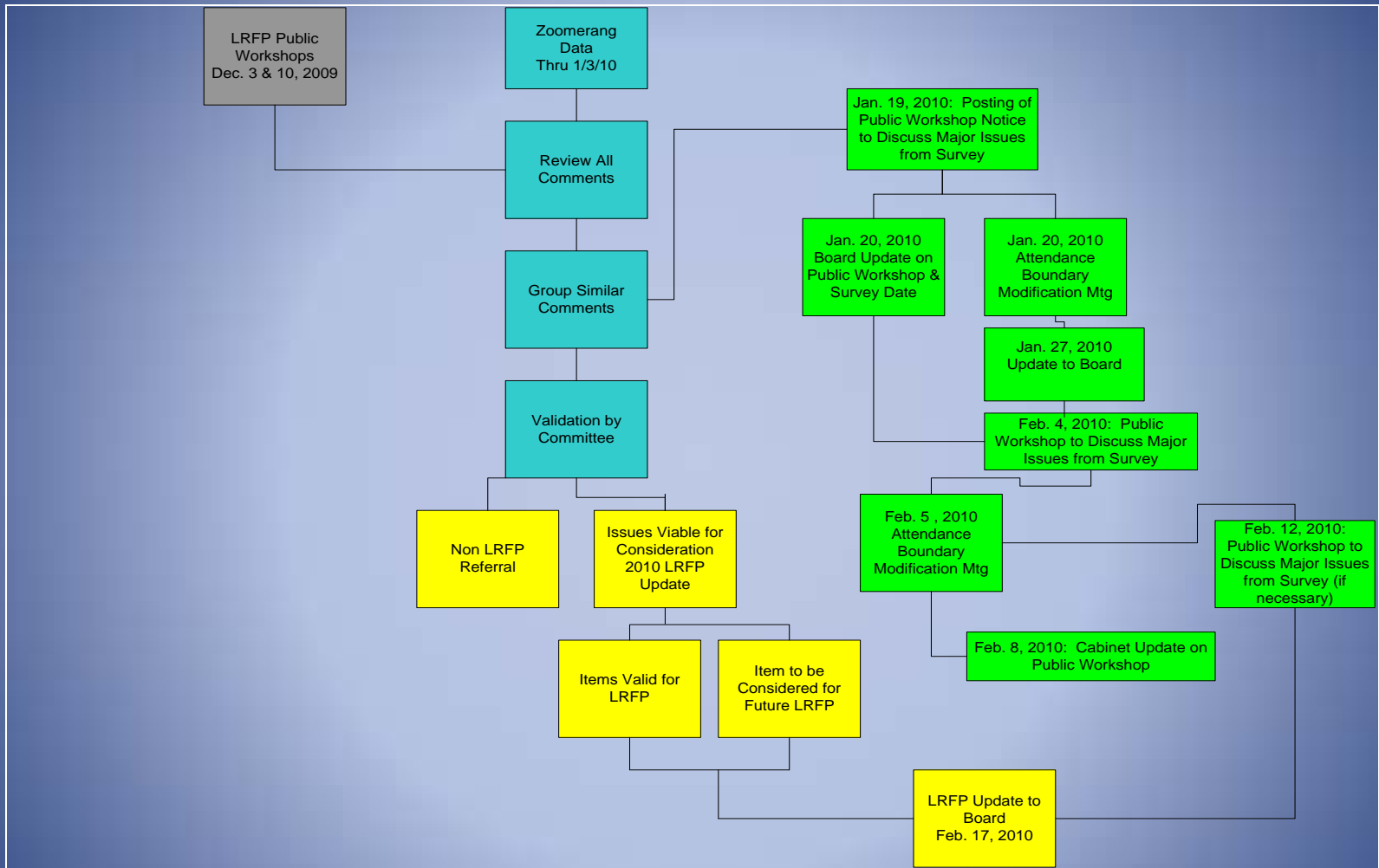
2. Tasks in Progress

- ❖ *Maintenance & Operations, Facilities & Planning, and the Construction Staff, in conjunction with the Area Superintendents, will review and validate campus/facility requests subsequently followed by line item cost estimating*
- ❖ *Development of Long Range Facilities Plan Sections*
- ❖ *A school operational use/capacity study*
- ❖ *Input related to long range technology, bus, portable buildings and furniture, and/or equipment needs*
- ❖ *Review and validation of facility items received from Public Workshops and online feedback for inclusion into plan if appropriate*
- ❖ *Board update on public input is scheduled for January 20, 2010*

3. Upcoming Tasks

- *February 4, 2010, Public Workshop to discuss major issues received via workshops and/or online feedback*
- *February 2010 - Brief Board of Trustees on 2010 Long Range Facility Planning Process*
- *February – May 2010 - Refinement of Long Range Facilities Plan with input received utilizing resources as required*
- *May – August 2010 - Facility Planning Meetings*

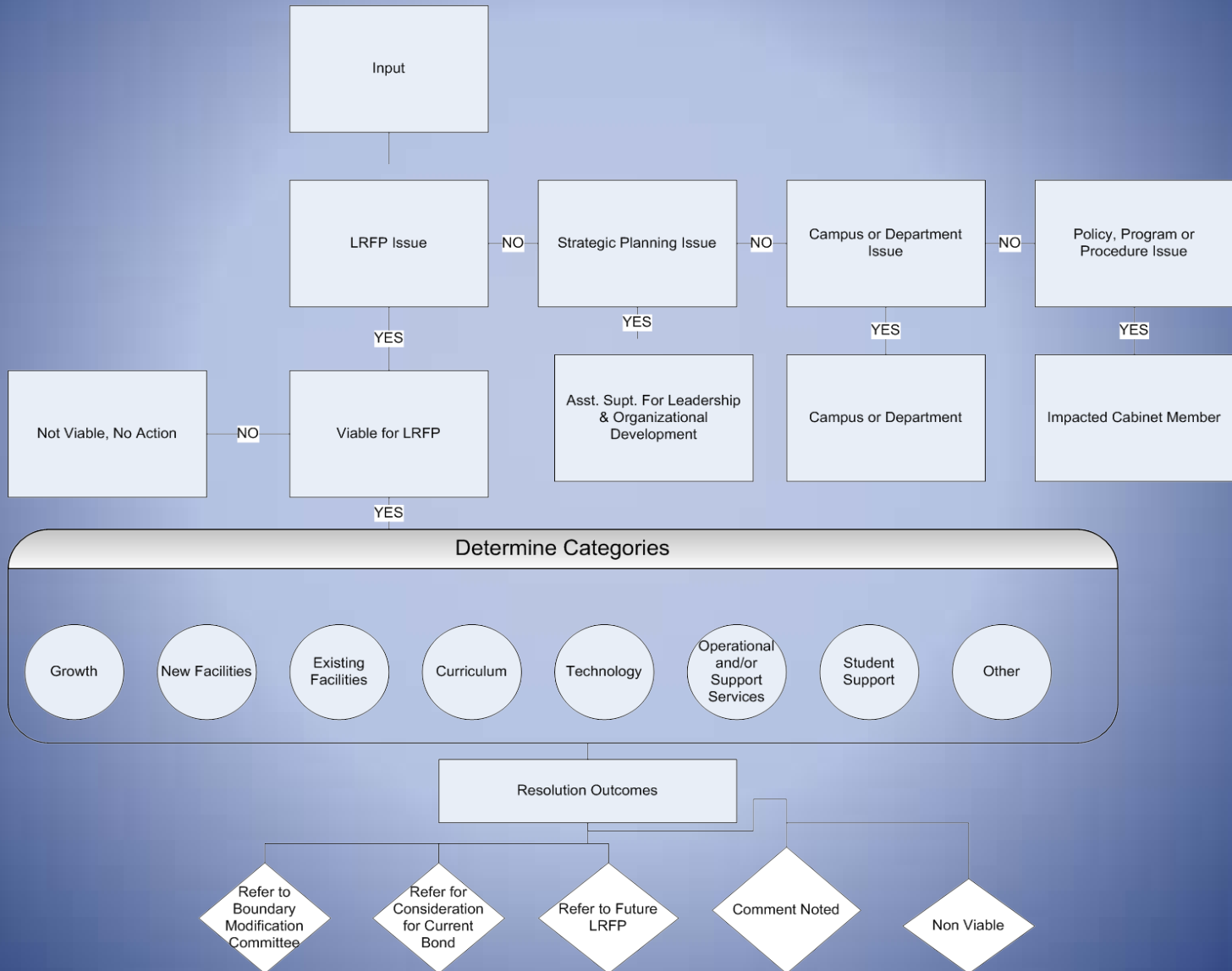
Long Range Facilities Planning Process Update



LRF PUBLIC INPUT REVIEW PROCESS
 January 19, 2010

Long Range Facilities Planning Process Update

Triage Process



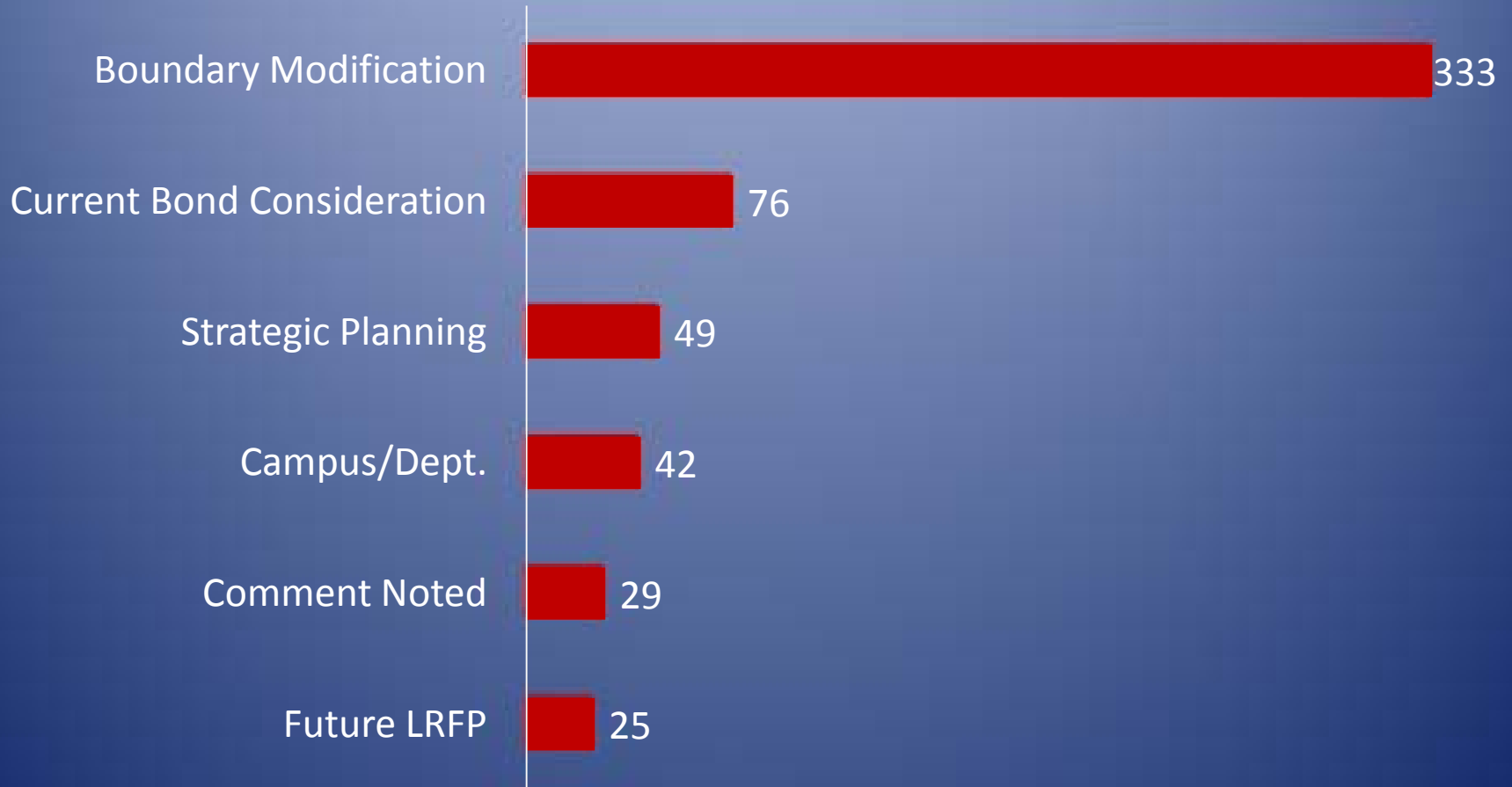
Long Range Facilities Planning Process Update

Responses by Category



Long Range Facilities Planning Process Update

Resolutions



Note: Certain components by category resulted in multiple proposed resolutions.

Long Range Facilities Planning Process Update

Land Use Zones Currently Under Consideration for Boundary Modification
Yellow Zones – High School

