

LEADERSHIP KATY

DIVISION OF TEACHING & LEARNING

January 12, 2012

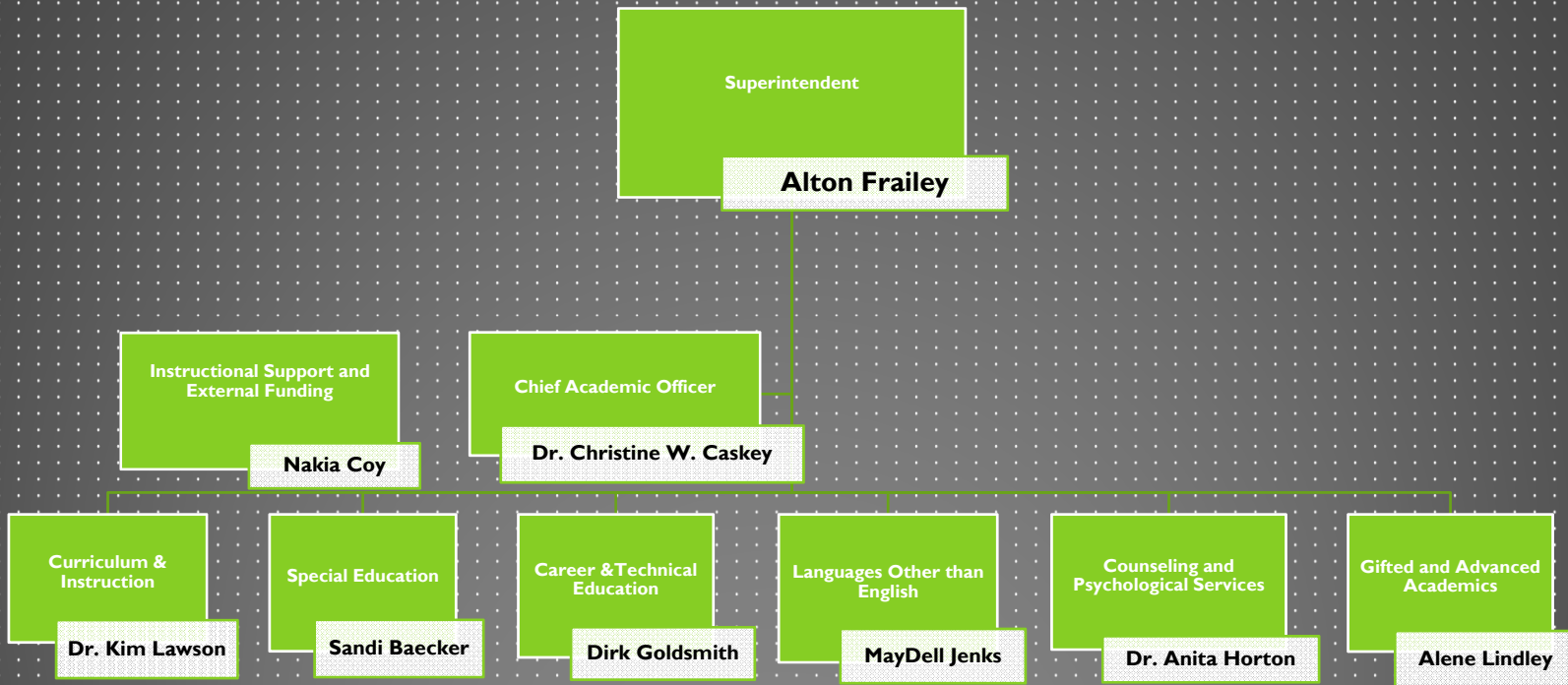


KATY ISD MISSION

Katy Independent School District, the leader in educational excellence, together with family and community, provides **unparalleled learning experiences** designed to prepare and inspire each student to live an honorable, fulfilling life – to create the future.

Board approved: 2.28.11

ORGANIZATIONAL CHART



GOAL:

To provide data-informed leadership and support to schools with a unified voice through:

Curriculum

Instruction

Assessment

Professional Learning



TEACHING & LEARNING DIVISION FOCUS DOCUMENT

Teaching and Learning Division Focus

KATY ISD MISSION

Katy Independent School District, the leader in educational excellence, together with family and community, provides unparalleled learning experiences designed to prepare and inspire each student to live an honorable, fulfilling life – *to create the future.*

Board approved: 2.28.11

The Teaching & Learning Division provides data-informed leadership and support to schools with a unified voice through the following:

Curriculum

Ensure that every KISD teacher has a rigorous, relevant curriculum that:

- Aligns to state and national standards, including:
 - Texas Essential Knowledge and Skills (TEKS)
 - Texas College Readiness Standards
 - College Board Advanced Placement Standards
 - English Language Proficiency Standards (ELPS)
 - Technology Standards
- Provides clarity through concise language, clearly articulated content, and aligned resources.

Instruction

Support teachers to ensure that every student experiences engaging, relevant, and differentiated instruction that:

- Fosters the 4C's (creative thinking, critical thinking, collaboration and communication).
- Provides meaningful, rigorous, and relevant learning experiences.
- Integrates technology to enhance student learning.
- Encourages connections between and among disciplines/content areas.
- Requires transfer and application of knowledge and skills to new experiences.
- Promotes academic, emotional, physical, social, and behavioral skills.
- Leads to deeper levels of understanding and encourages metacognition.

Assessment

Support teachers in the collaborative design and development of relevant tasks to assess student learning that:

- Use formative and summative formats to inform and guide instruction including pre-assessment.
- Provide students with multiple opportunities to demonstrate learning.
- Include assessments that are developed prior to instruction and intended to align to KISD objectives.
- Measure the desired learning outcome(s).
- Consist of a variety of assessments (i.e., authentic, project-based, formal/informal, teacher observations and/or cross-curricular assessments).
- Allow students to be actively involved in using evaluation criteria to self-monitor, self-reflect, and self-evaluate.

Professional Learning

Support and provide professional learning experiences that:

- Include job-embedded learning experiences.
- Focus on improving student learning.
- Address adult learning styles.
- Include feedback, sustained support and accountability.
- Address identified individual/campus/program/district needs.
- Incorporate research-based strategies and best practices that support differentiated instruction.

November 2, 2011

CURRICULUM

Ensure that every KISD teacher has a rigorous curriculum that:

- **Aligns** to state and national standards, including:
 - Texas Essential Knowledge and Skills (TEKS)
 - Texas College Readiness Standards
 - College Board Advanced Placement Standards
 - English Language Proficiency Standards (ELPS)
 - Technology Standards
- Provides **clarity** through concise language, **clearly articulated content**, and **aligned resources**.

CURRICULUM DEVELOPMENT

- * Identify the Know Understand Do (KUDs)**
- * Formulate Essential Questions**
- * Determine Assessments that Measure the KUDs**
- * Design the Instructional Delivery**

INSTRUCTION

- Fosters the **4Cs** (**C**reative thinking, **C**ritical thinking, **C**ollaboration and **C**ommunication).
- Provides **meaningful, rigorous, and relevant** learning experiences.
- **Integrates technology** to enhance student learning.
- Encourages **connections** between and among disciplines/content areas.
- Requires **transfer and application** of knowledge and skills to new experiences.
- Promotes academic, emotional, physical, social, and behavioral skills.
- Leads to deeper levels of **understanding** and encourages **metacognition**.

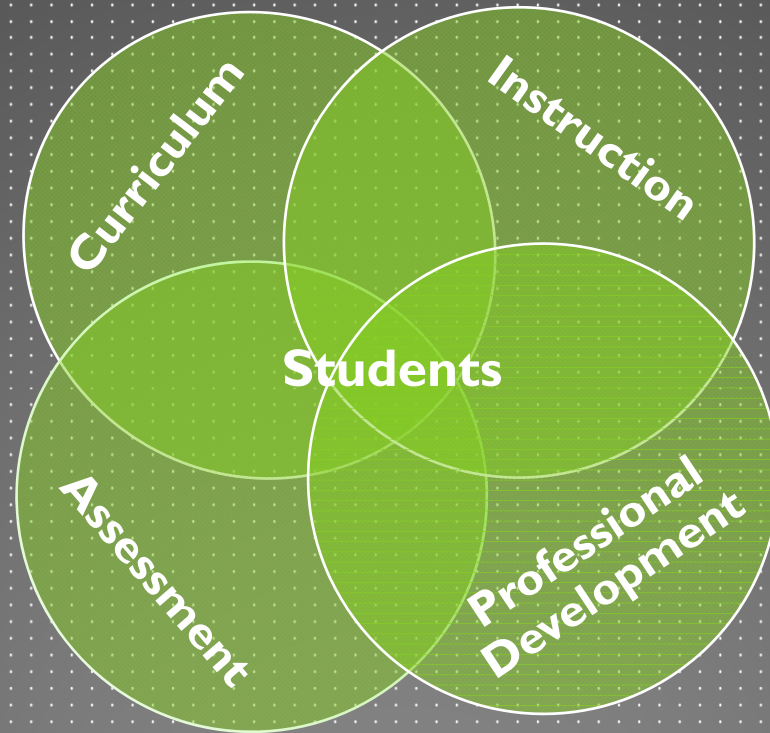
ASSESSMENT

- Use **formative** and **summative** formats to inform and guide instruction including **pre-assessment**.
- Provide students with **multiple opportunities** to demonstrate learning.
- Include assessments that are developed **prior to instruction** and intended to align to KISD objectives.
- **Measure** the desired learning outcome(s).
- Consist of a **variety** of assessments (i.e., authentic, project-based, formal/informal, teacher observations and/or cross-curriculum assessments).
- Allow students to be actively involved in using evaluation criteria to **self-monitor, self-reflect**, and self-evaluate.

PROFESSIONAL LEARNING

- ⦿ Include **job-embedded** learning experiences.
- ⦿ Focus on improving **student learning**.
- ⦿ Address adult **learning styles**.
- ⦿ Include **feedback**, sustained **support** and **accountability**.
- ⦿ Address **identified** individual/campus/program/district needs.
- ⦿ Incorporate research-based **strategies** and **best practices** that support **differentiated** instruction.

THE CONNECTIONS



TEACHING & LEARNING DIVISION

Leadership Katy

January 12, 2012

