

Federal Funding Programs Survey

Results and Analysis

Katy ISD

School Year: 2022-2023



Overview of the Research Study

The Katy Independent School District (ISD) Federal Funding Programs Survey asked parents/guardians and staff members for feedback on the District's performance in providing special services and use of federal funding.

The survey was open March 5 to March 25.

Email invitations with unique survey links were sent to parents/guardians and staff members. Reminders were sent throughout the survey window.

There was a version of the survey for each participant group.

This report summarizes district-level survey results and breaks them down by participant group. Also included is a comparison of this year's results to the 2021-2022 survey administration.

Survey results do not reflect random sampling; therefore, they should not be generalized to all Katy ISD parents/guardians and staff members. Rather, results reflect only the perceptions and opinions of participants.

Findings for each item in the report exclude participants who did not answer. Data labels less than 5 percent are not shown in charts and graphs. Percentages may not total 100 due to rounding.

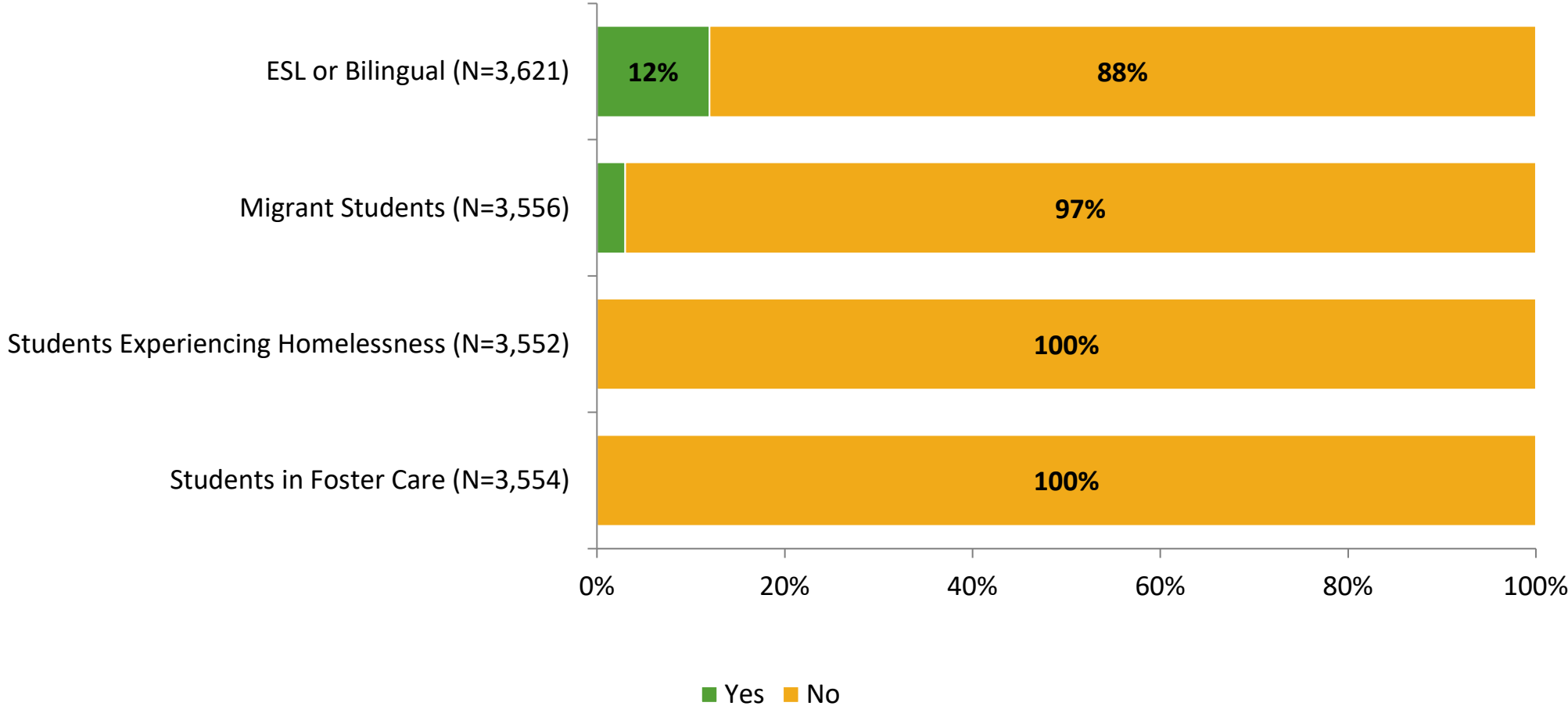
Participation

Responding Group	School Year	Number of Invitations Delivered (NMax)	Number of Responses (N)	Response Rate	Public Access Link Responses	Total Responses
Parents/Guardians	2022-2023	96,138	3,584	–	70	3,654
	2021-2022	78,765	2,920	–	49	4,460
Staff	2022-2023	15,486	3,430	22%	–	3,430
	2021-2022	14,581	2,380	16%	–	3,055

Participants' Roles and Involvement in Services

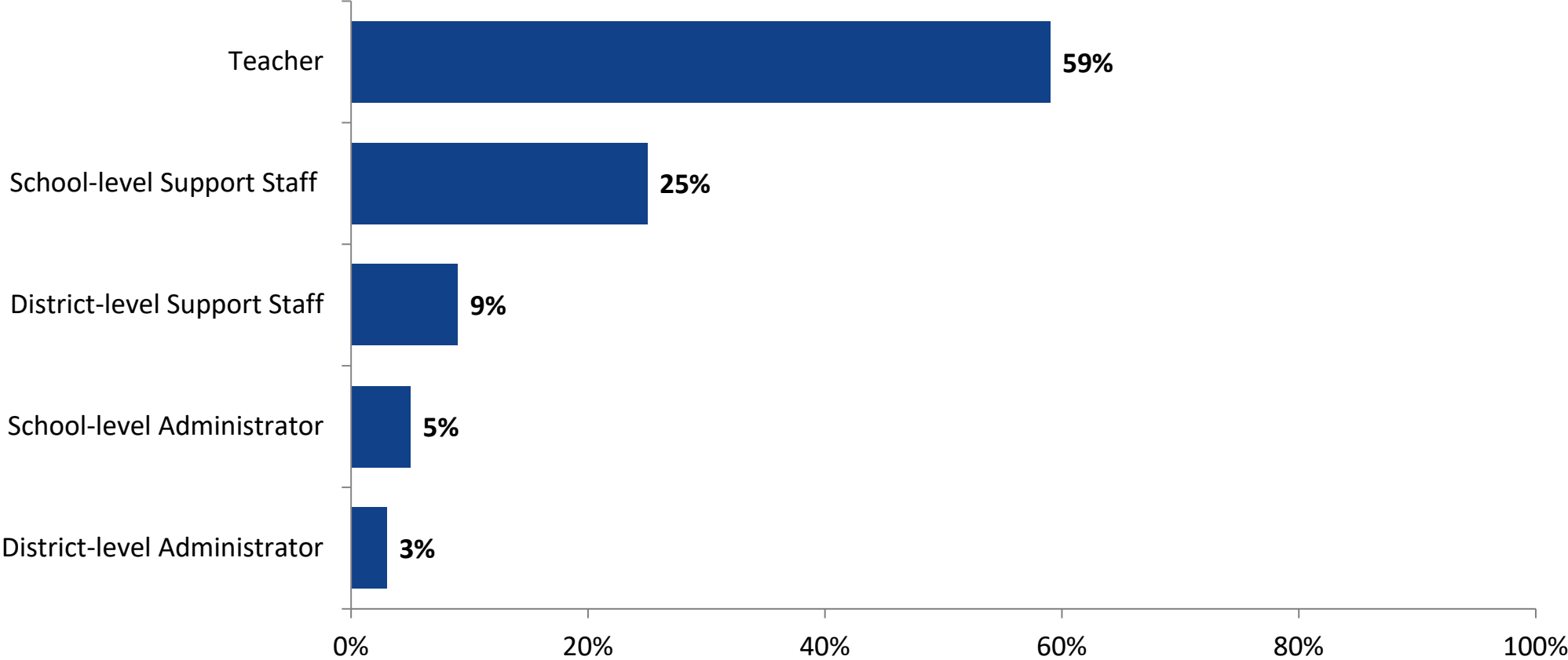
Involvement in Services

Is/are your child(ren) involved in any of the following?



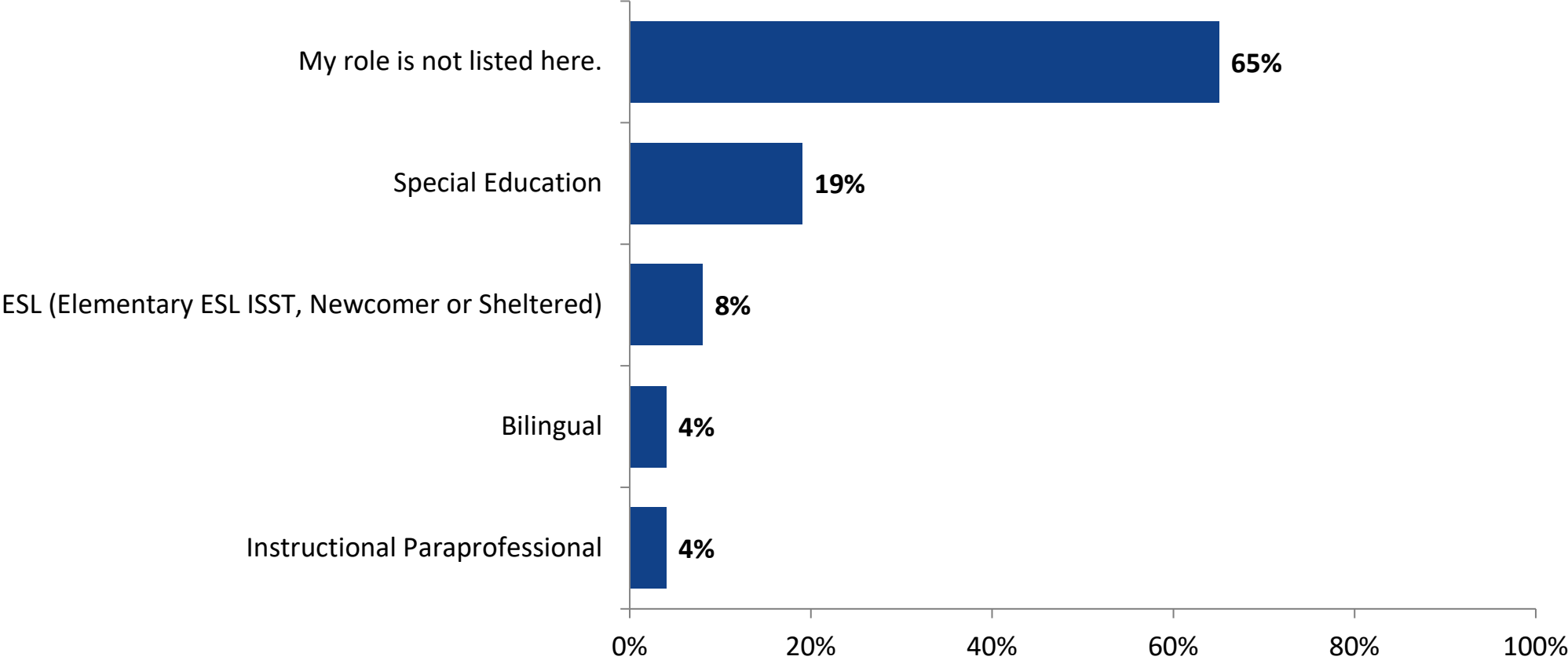
Work Position

Which of the following best describes your position in Katy ISD? (N=3,430)



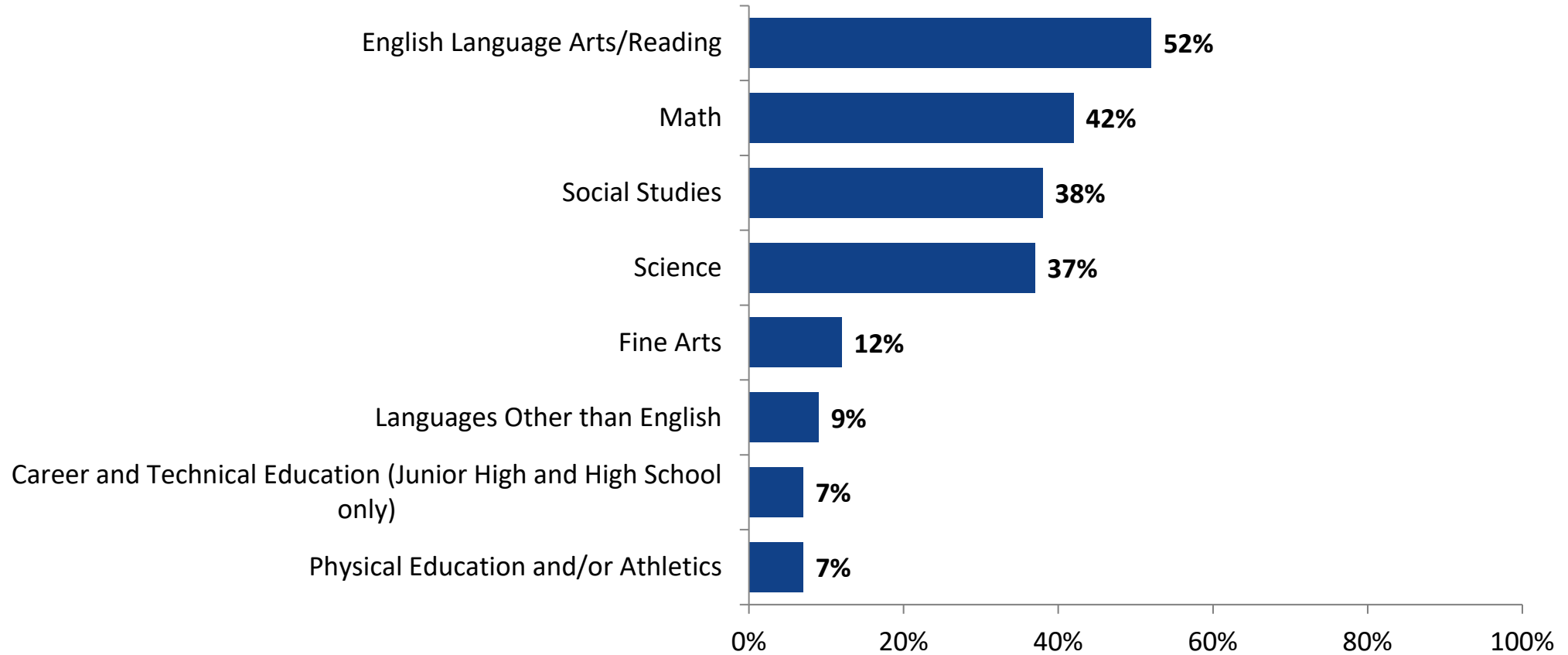
Work Role

Please indicate if your role within the school is one of the following: (N=2,762)



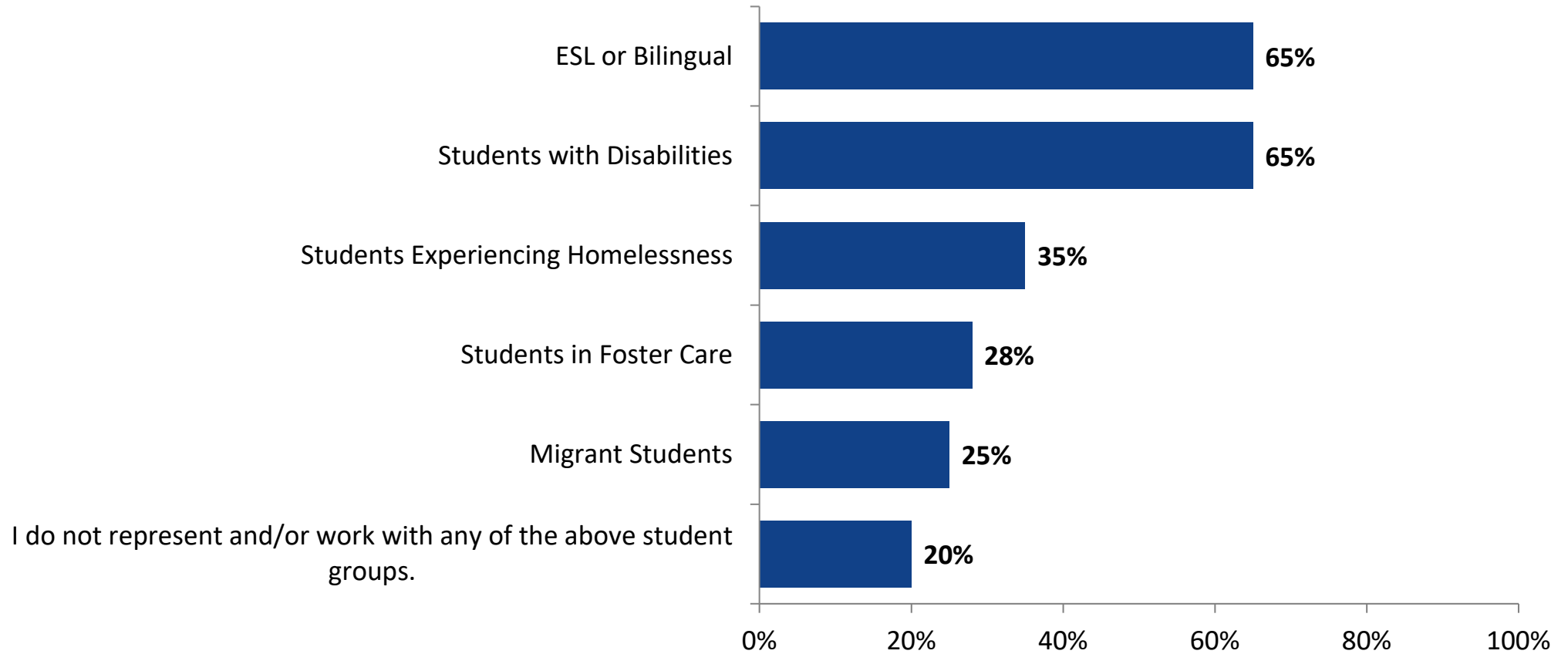
Content Area(s)

In which content area(s) do you work? (N=2,454)



Student Groups

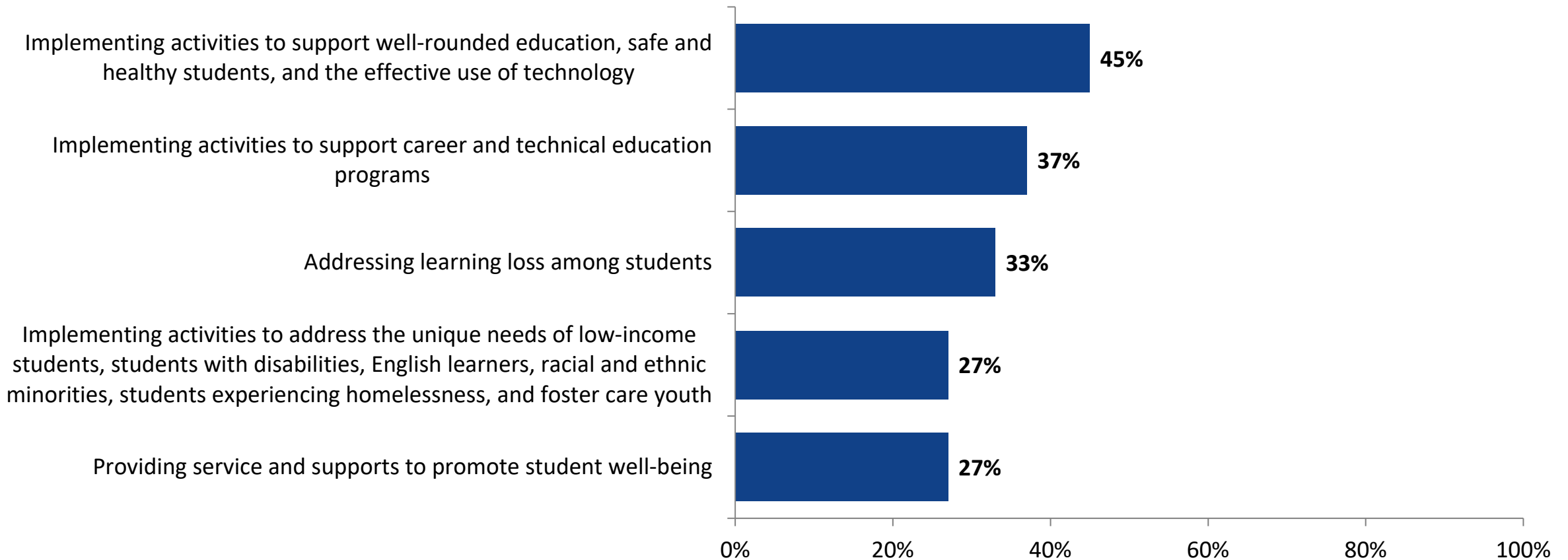
With which student groups do you work? (N=3,430)



ESSER III Programs

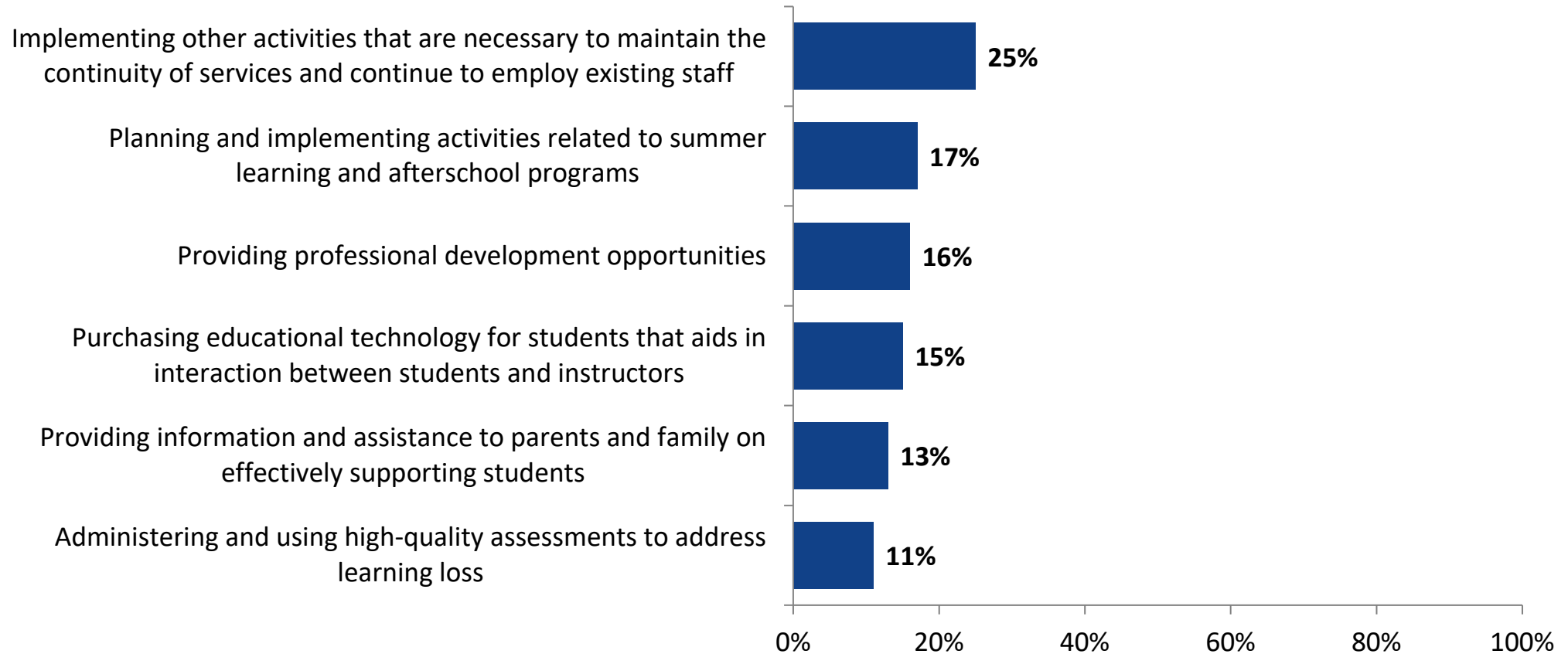
ESSER III Activities

Please select up to three activities on which you believe the District should focus. (N=3,653)



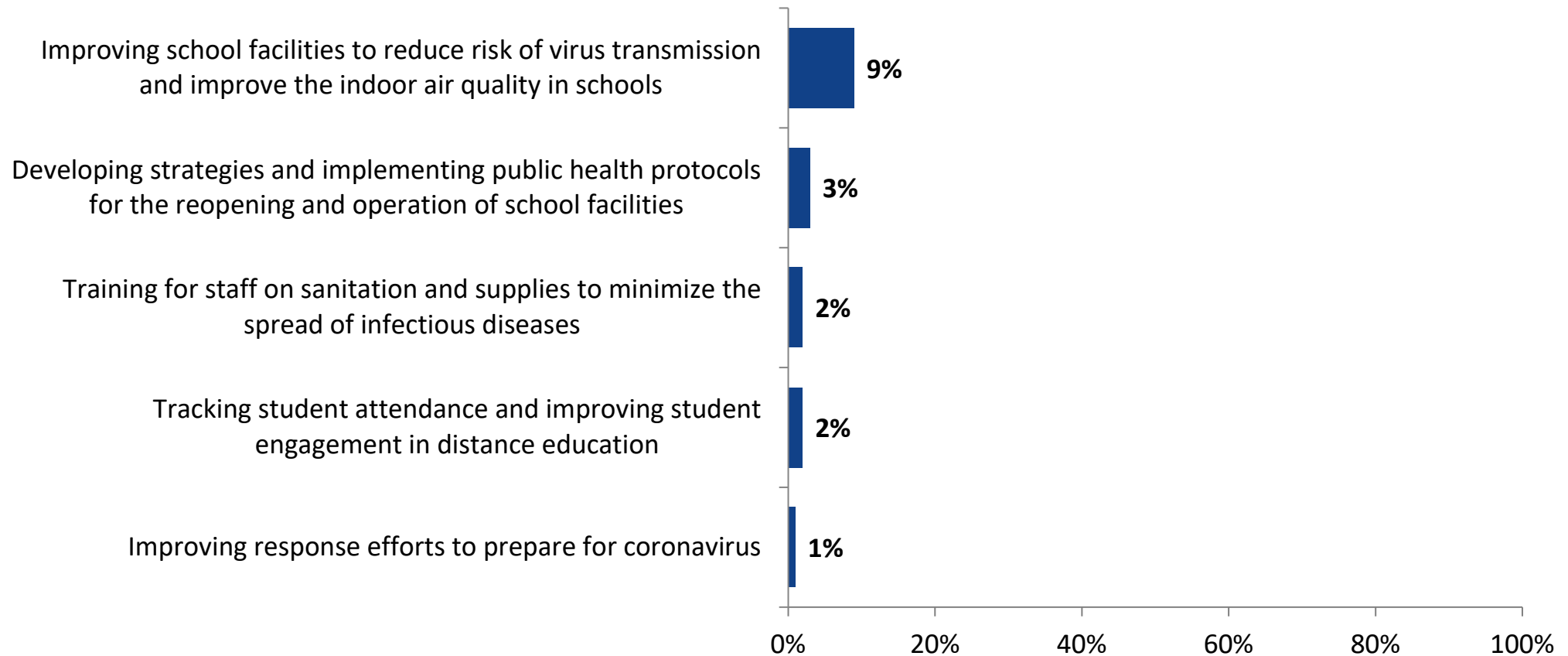
ESSER III Activities (Continued)

Please select up to three activities on which you believe the District should focus. (N=3,653)



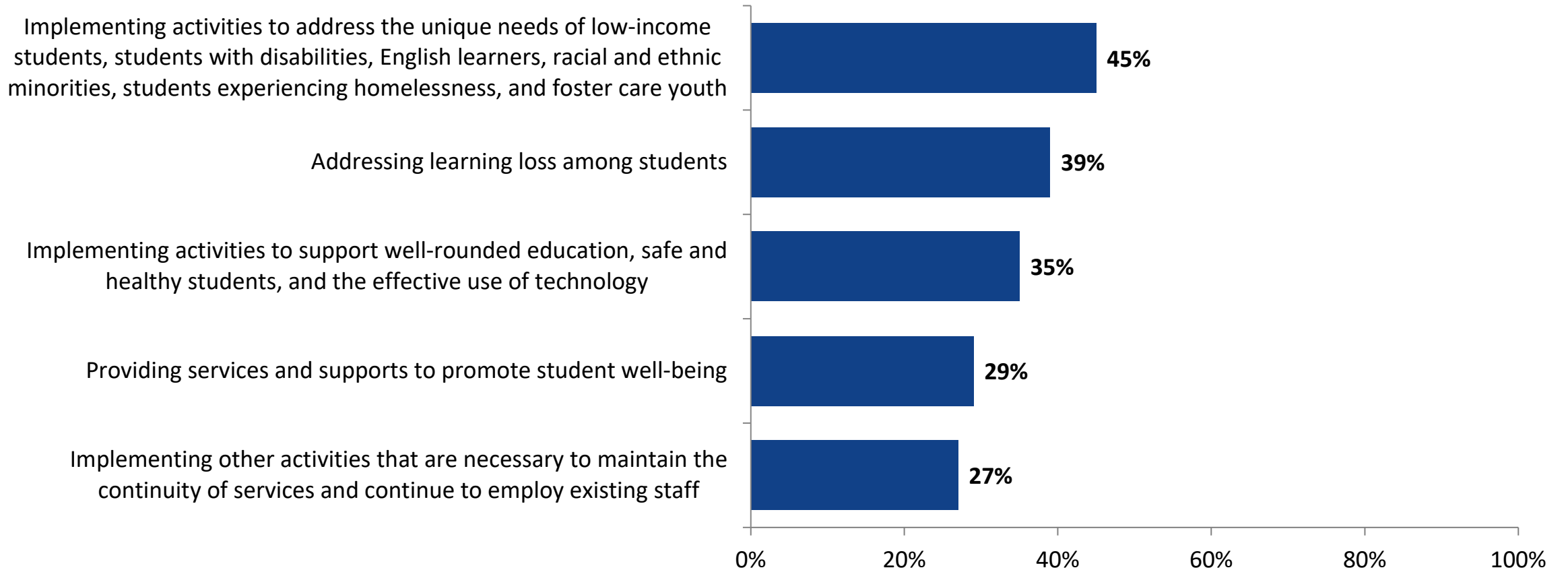
ESSER III Activities (Continued)

Please select up to three activities on which you believe the District should focus. (N=3,653)



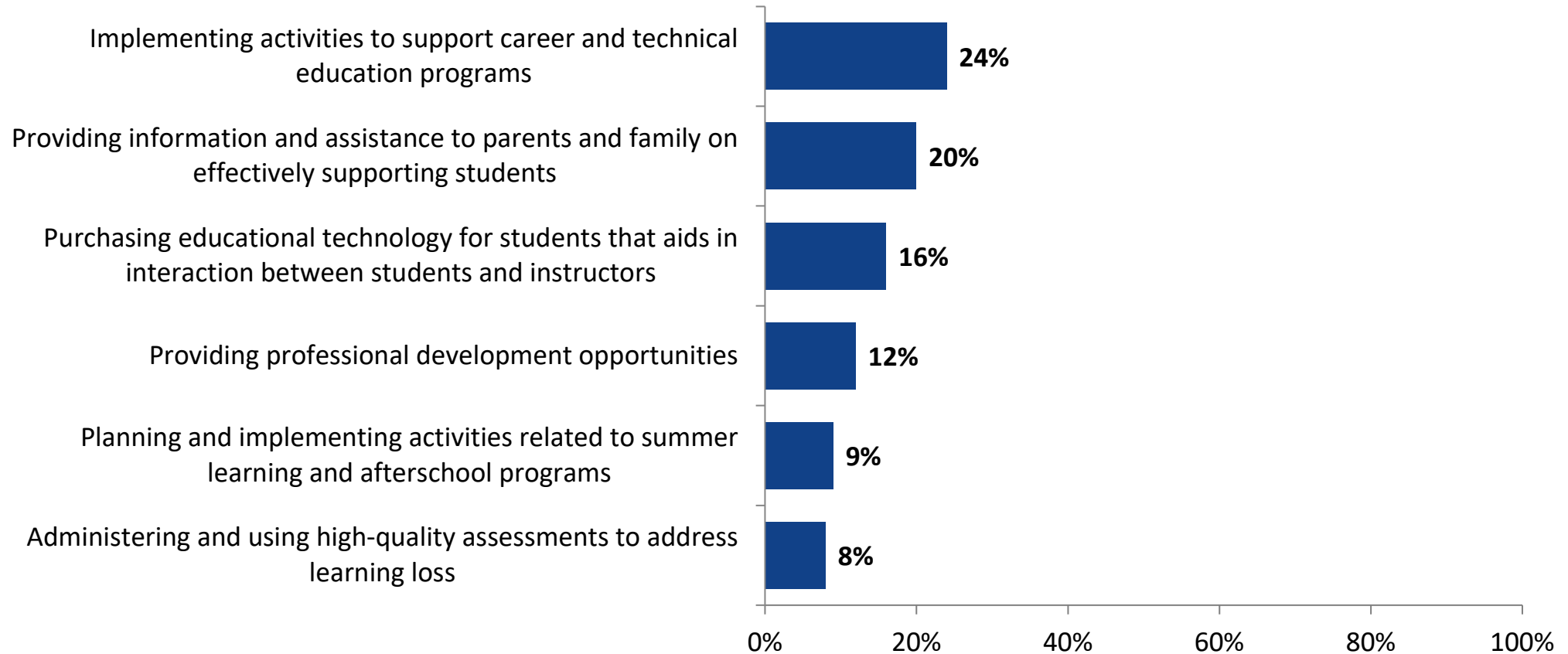
ESSER III Activities

Please select up to three activities on which you believe the District should focus. (N=3,430)



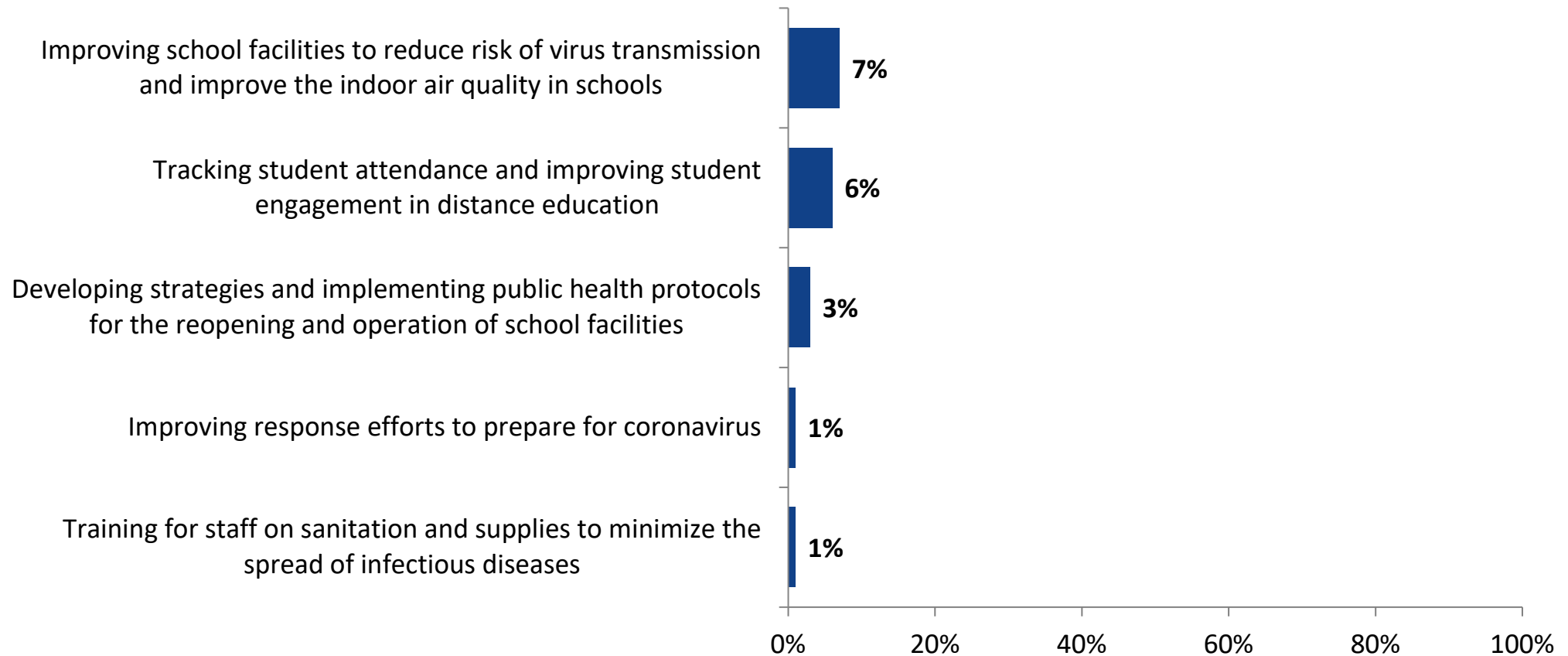
ESSER III Activities (Continued)

Please select up to three activities on which you believe the District should focus. (N=3,430)



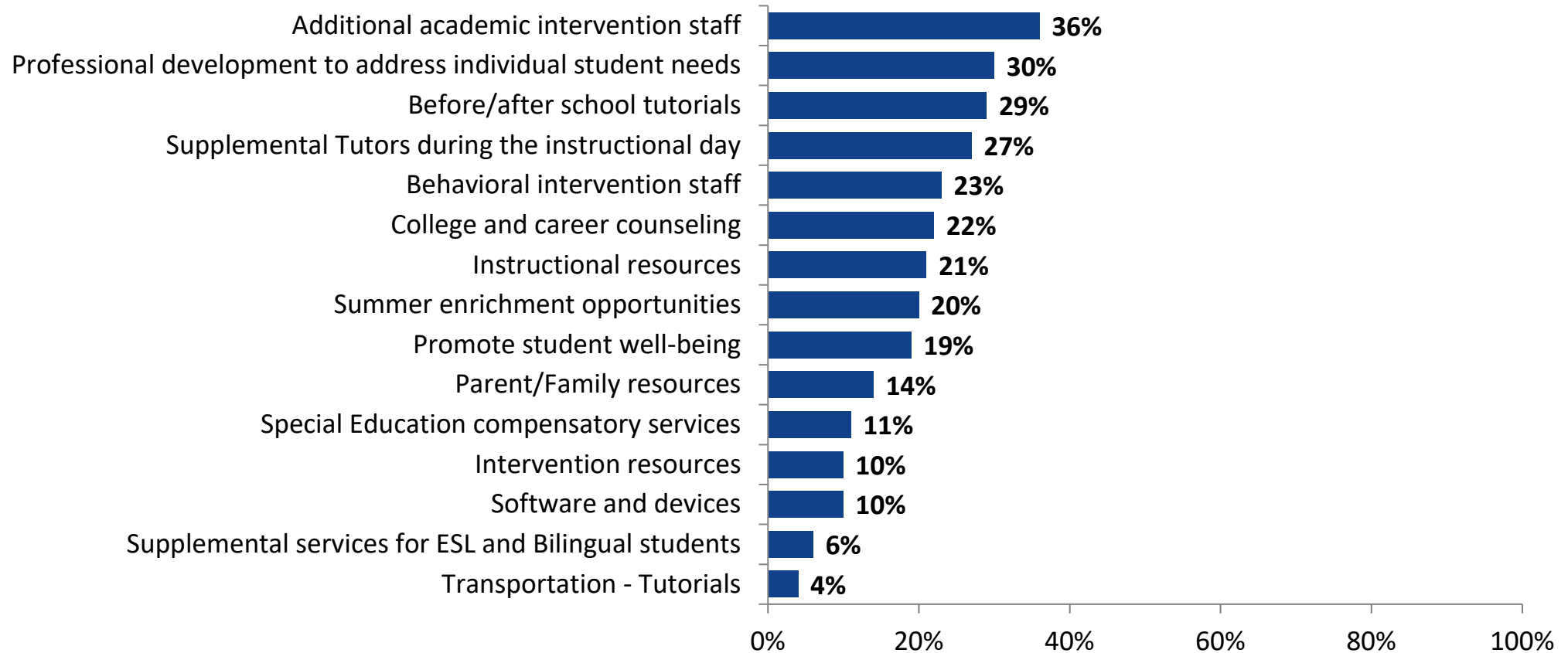
ESSER III Activities (Continued)

Please select up to three activities on which you believe the District should focus. (N=3,430)



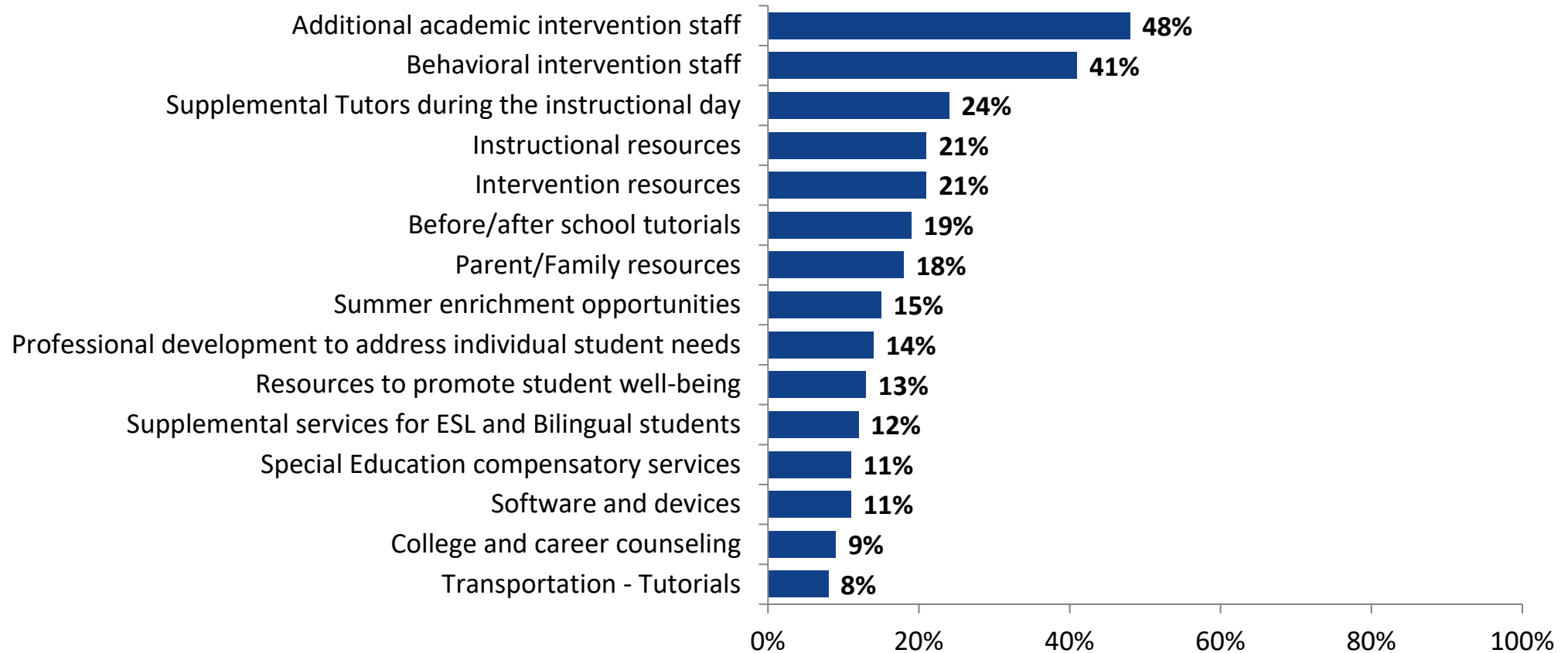
Addressing Learning Loss

Please select up to three strategies that you believe would be most effective in addressing learning loss. (N=3,653)



Addressing Learning Loss

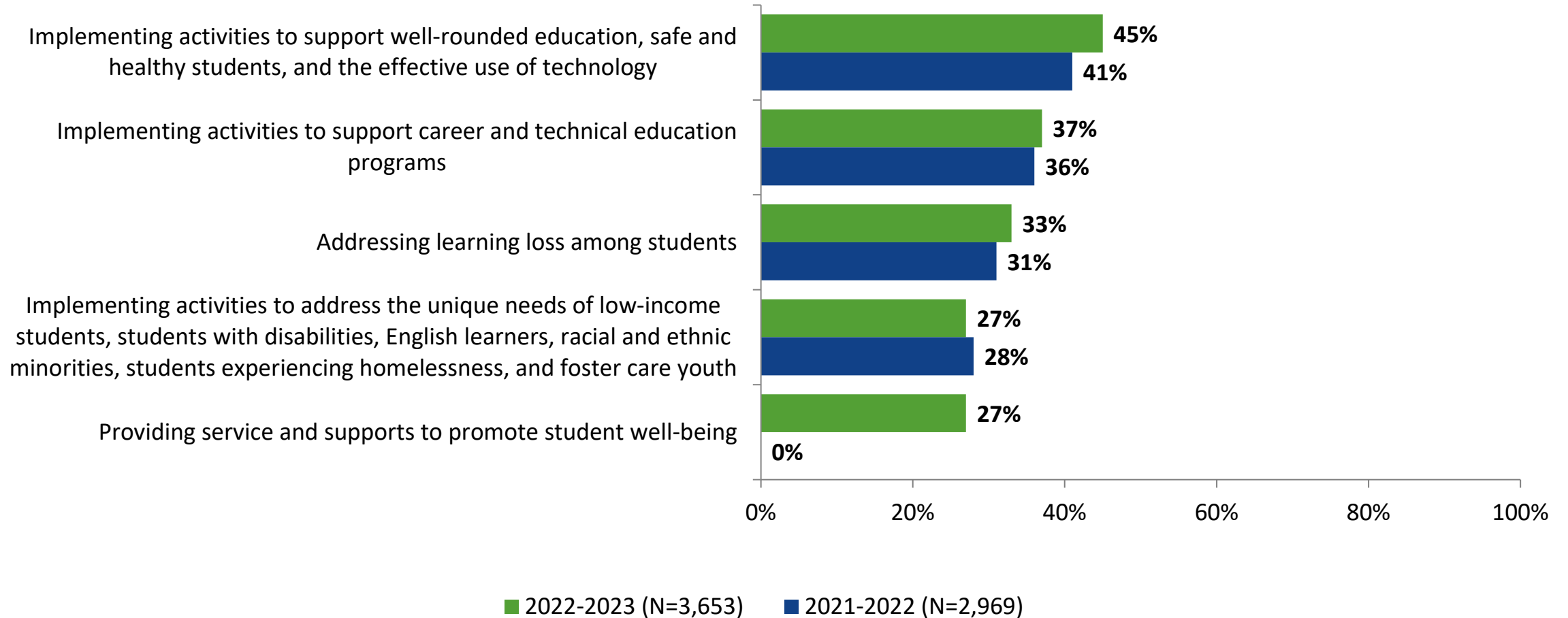
Please select up to three strategies that you believe would be most effective in addressing learning loss. (N=3,430)



Comparisons Over Time

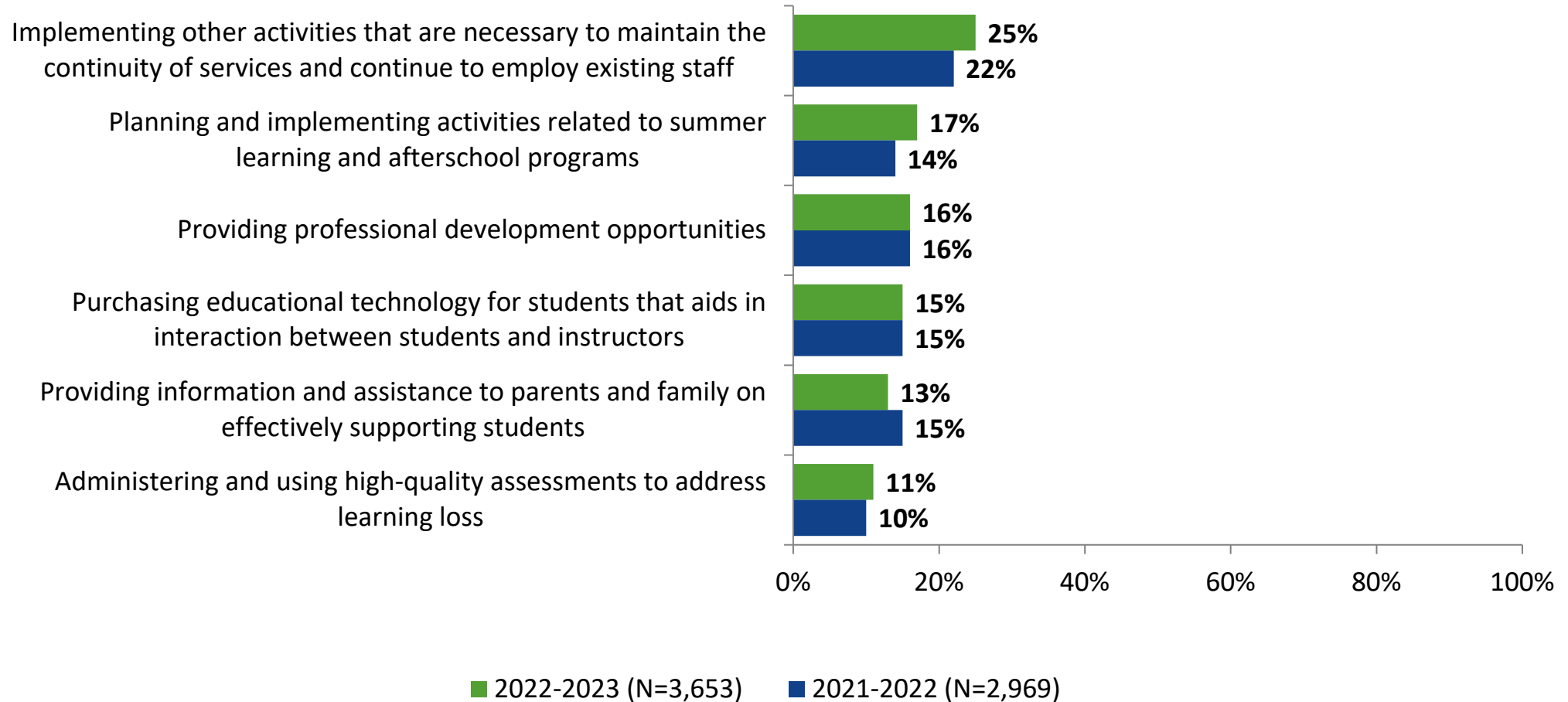
ESSER III Activities: Comparison Over Time

Please select up to three activities on which you believe the District should focus.



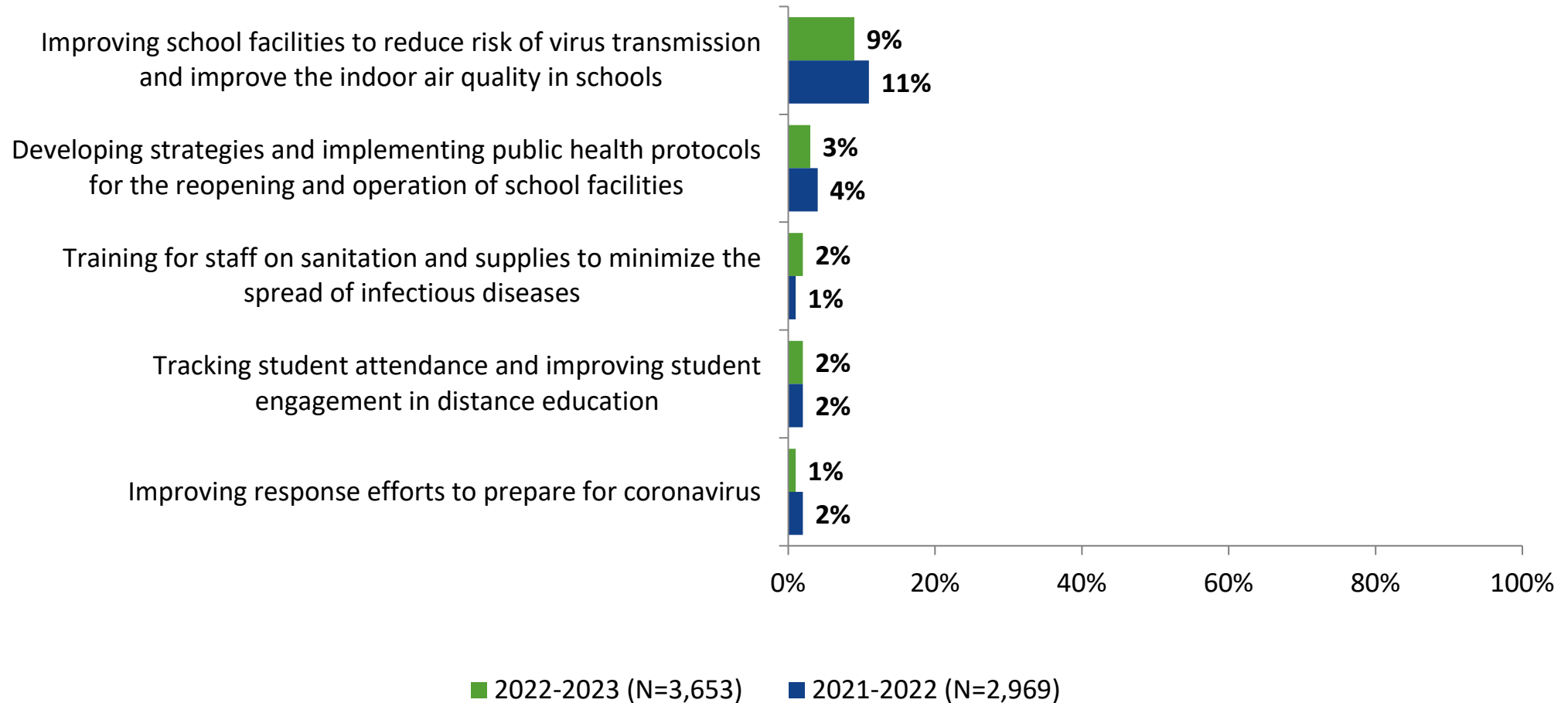
ESSER III Activities: Comparison Over Time (Continued)

Please select up to three activities on which you believe the District should focus.



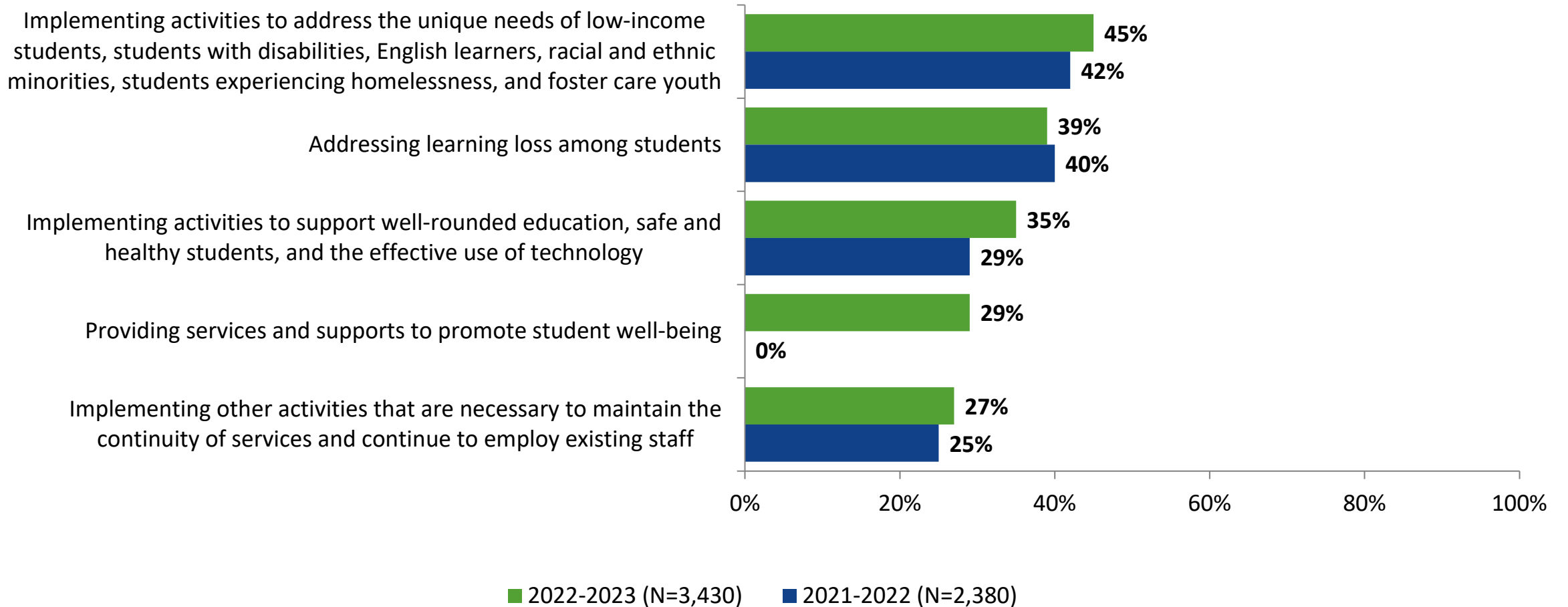
ESSER III Activities: Comparison Over Time (Continued)

Please select up to three activities on which you believe the District should focus.



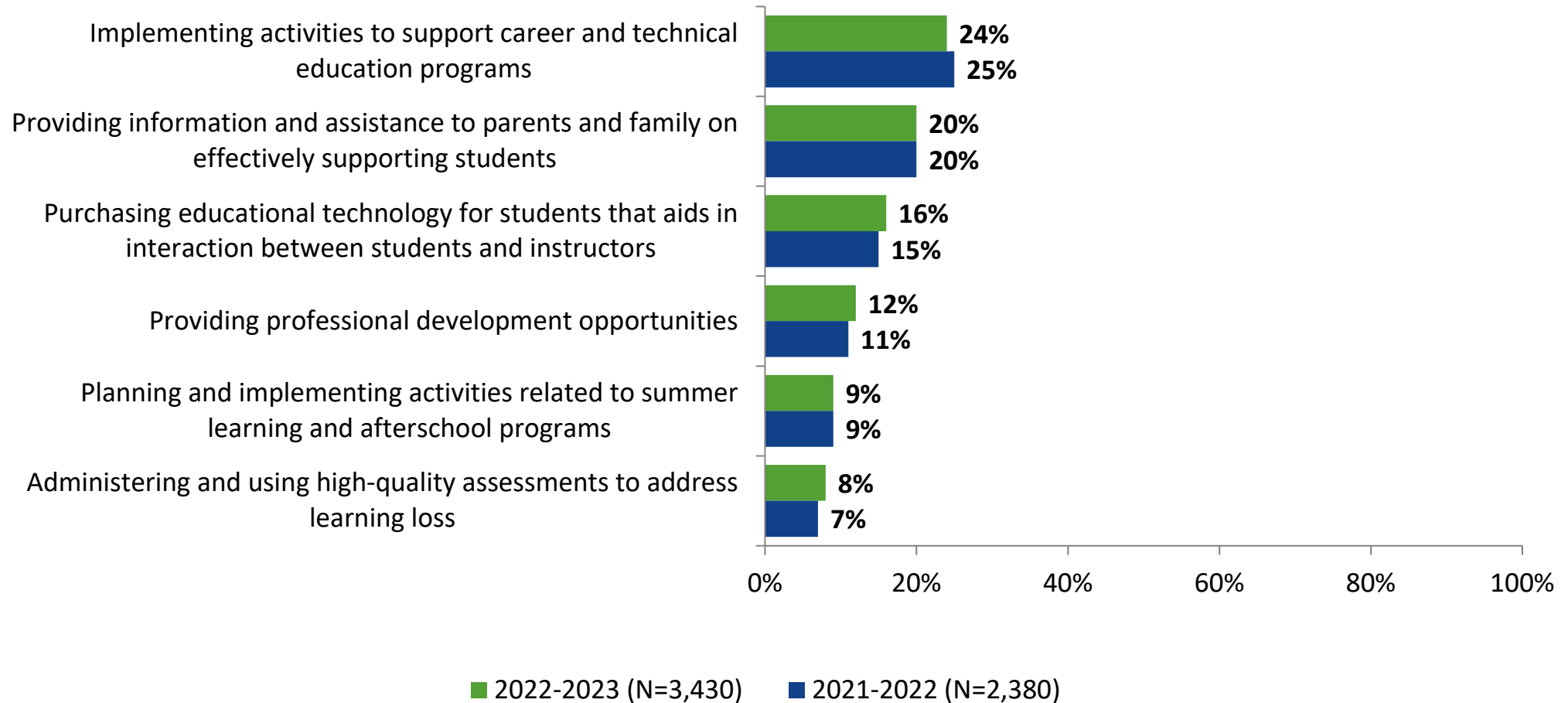
ESSER III Activities: Comparison Over Time

Please select up to three activities on which you believe the District should focus.



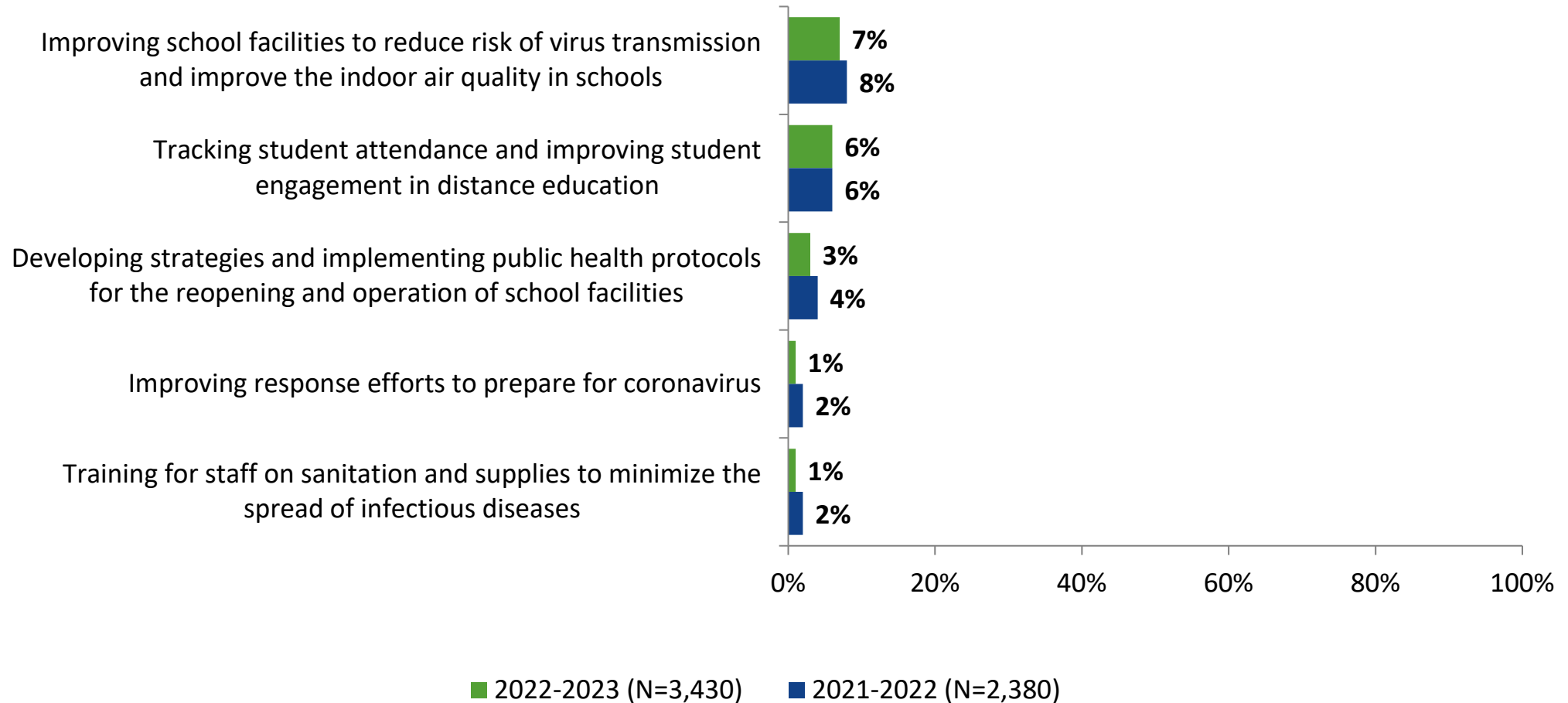
ESSER III Activities: Comparison Over Time (Continued)

Please select up to three activities on which you believe the District should focus.



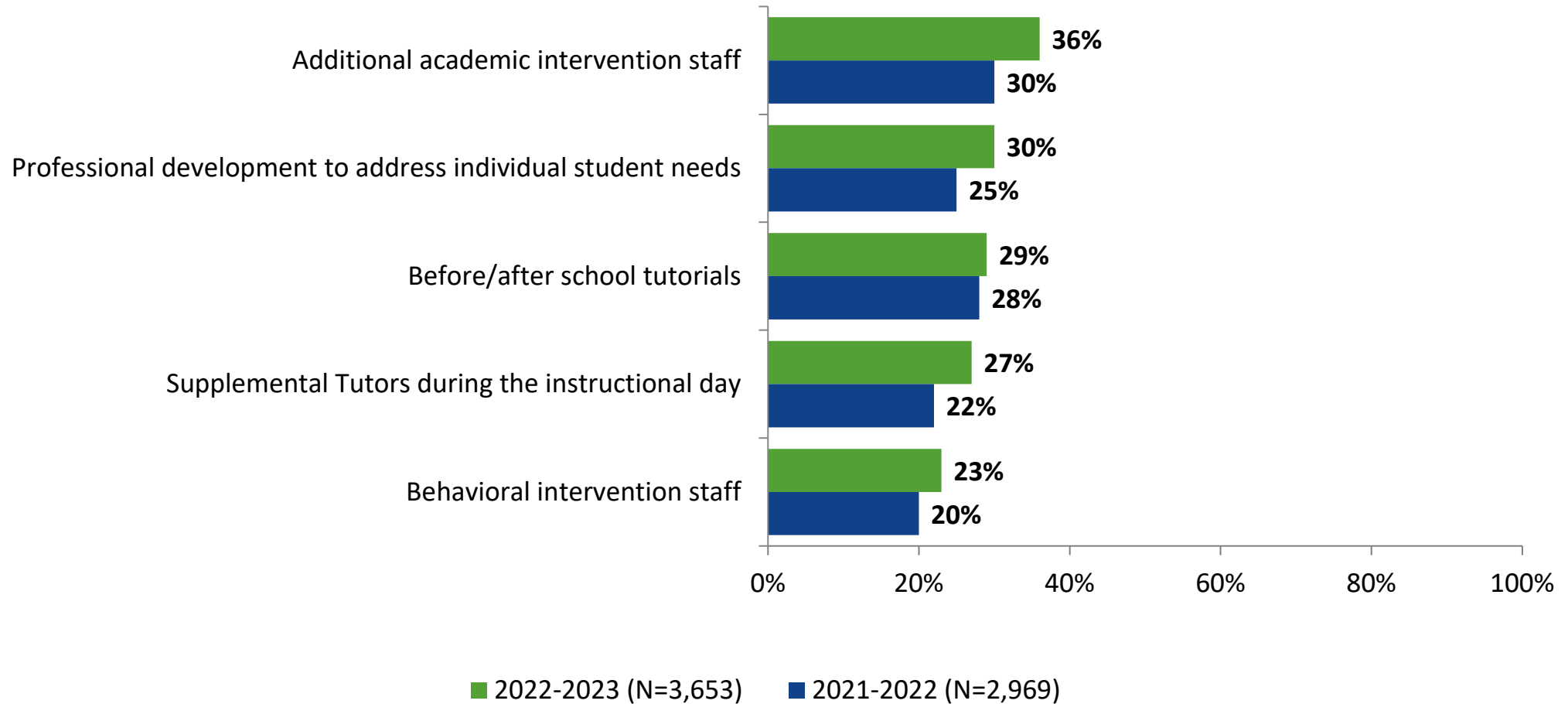
ESSER III Activities: Comparison Over Time (Continued)

Please select up to three activities on which you believe the District should focus.



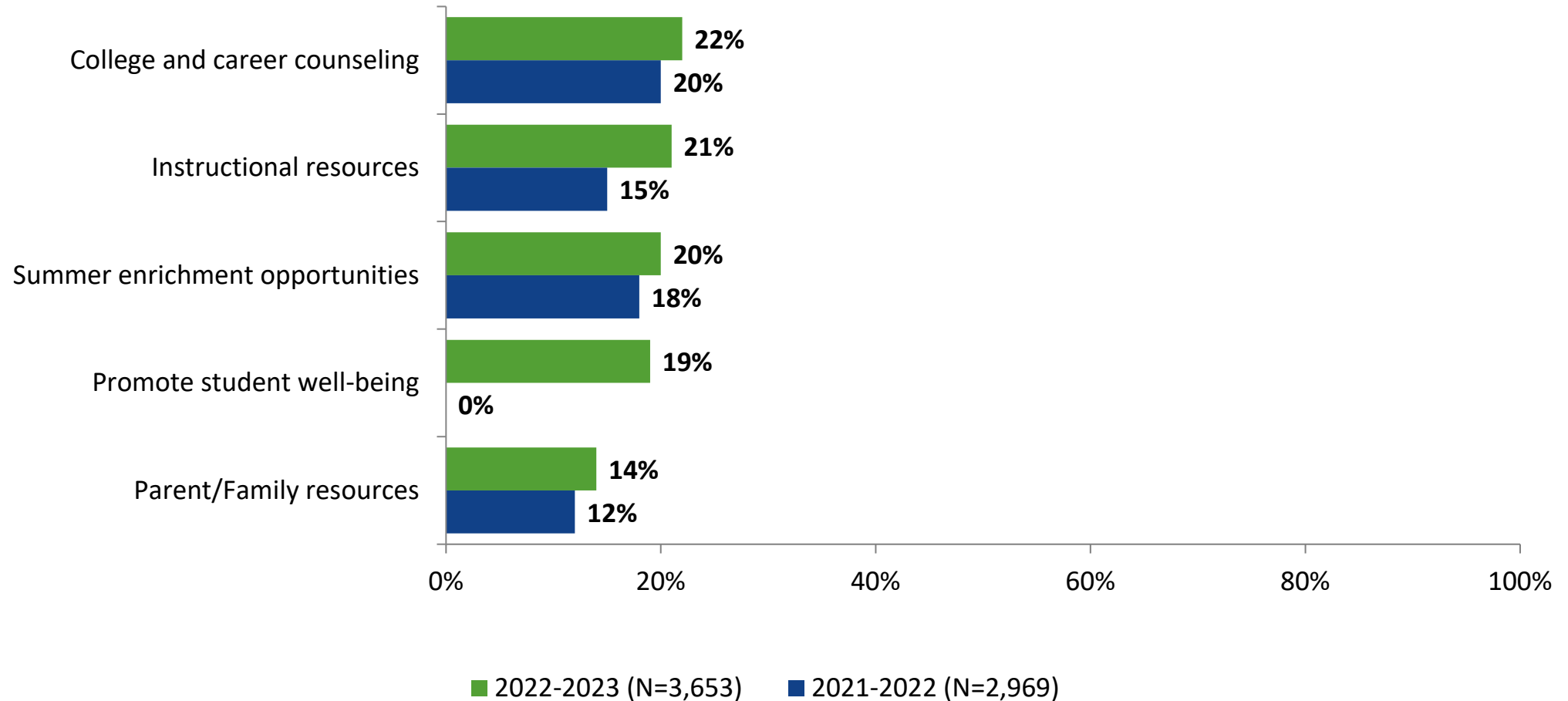
Addressing Learning Loss: Comparison Over Time

Please select up to three strategies that you believe would be most effective in addressing learning loss.



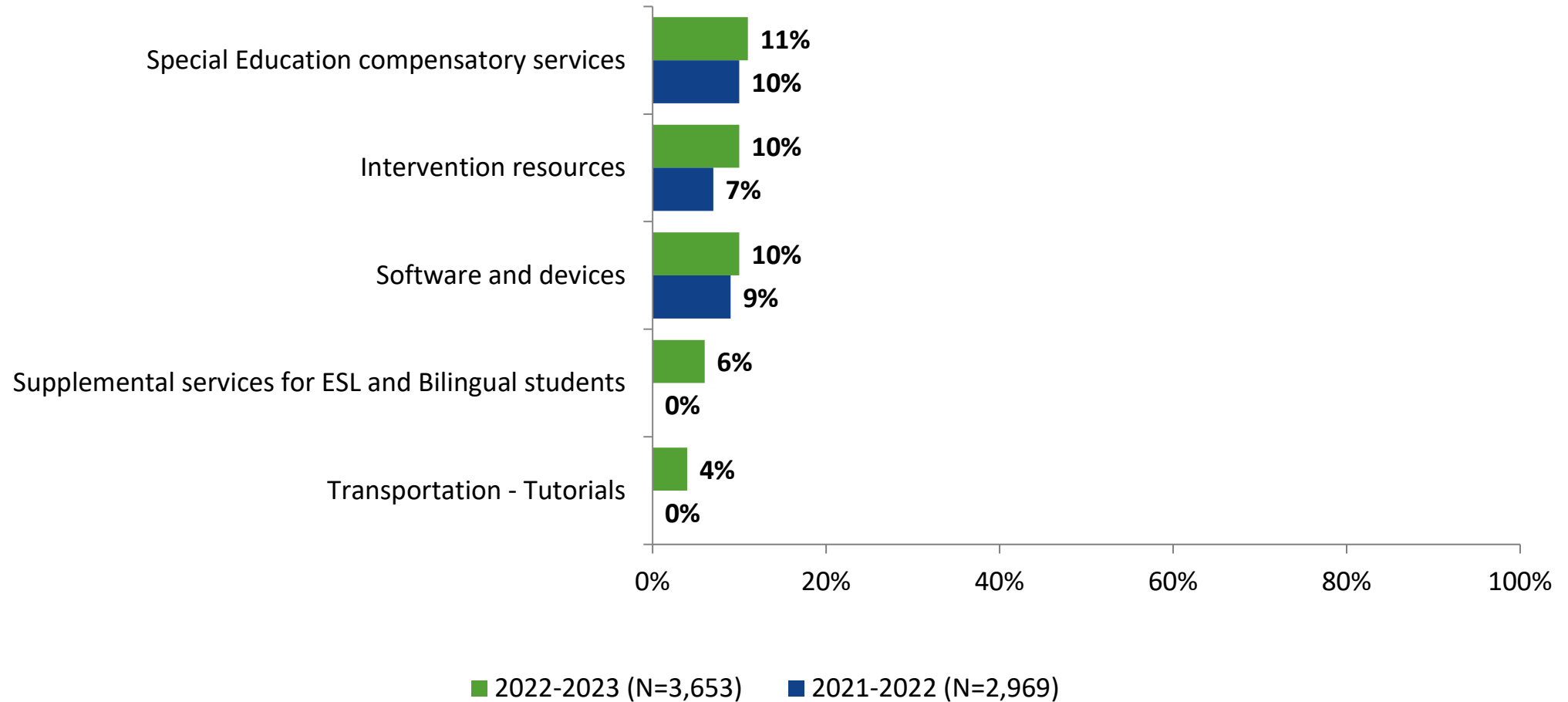
Addressing Learning Loss: Comparison Over Time (Continued)

Please select up to three strategies that you believe would be most effective in addressing learning loss.



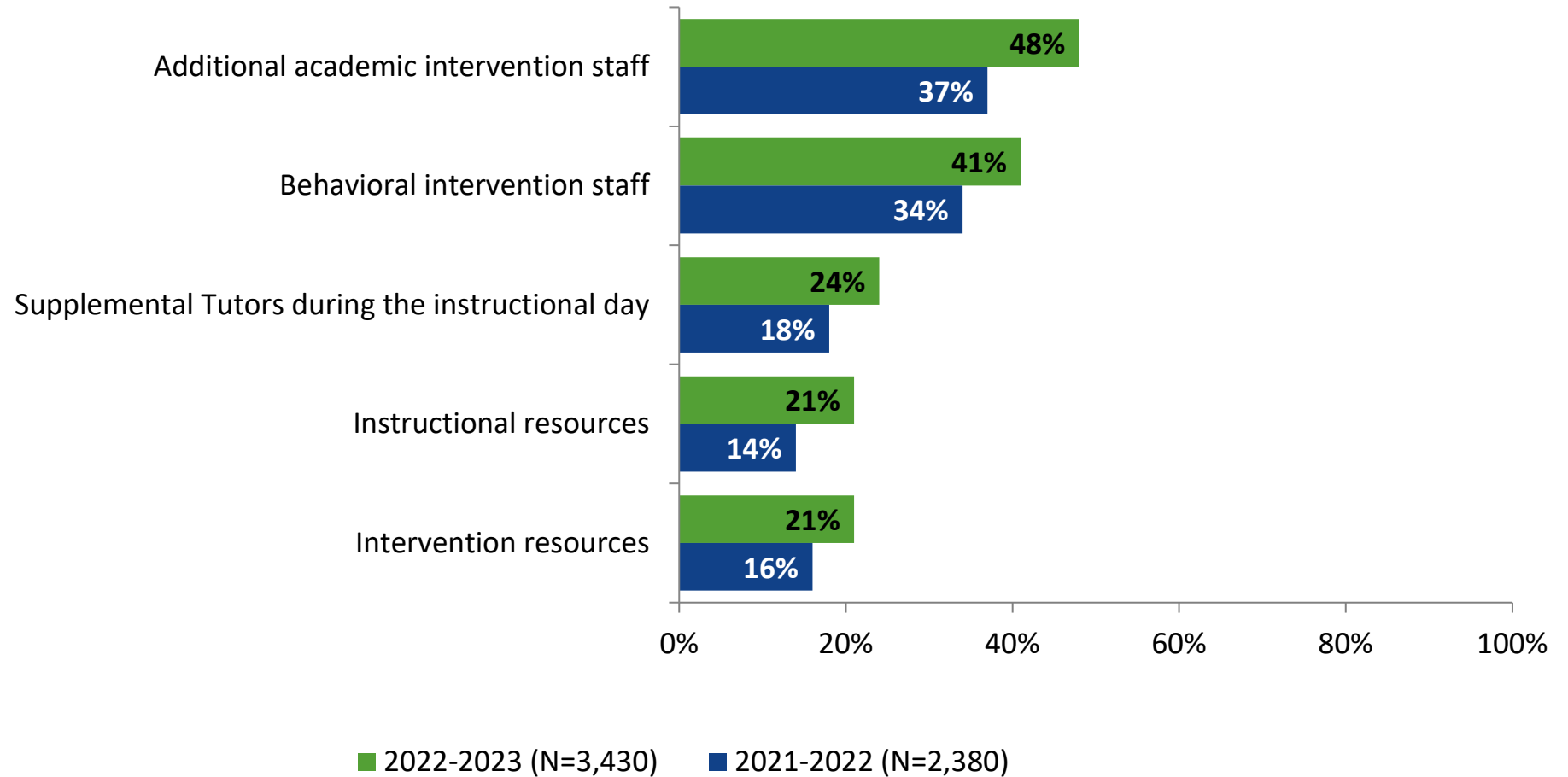
Addressing Learning Loss: Comparison Over Time (Continued)

Please select up to three strategies that you believe would be most effective in addressing learning loss.



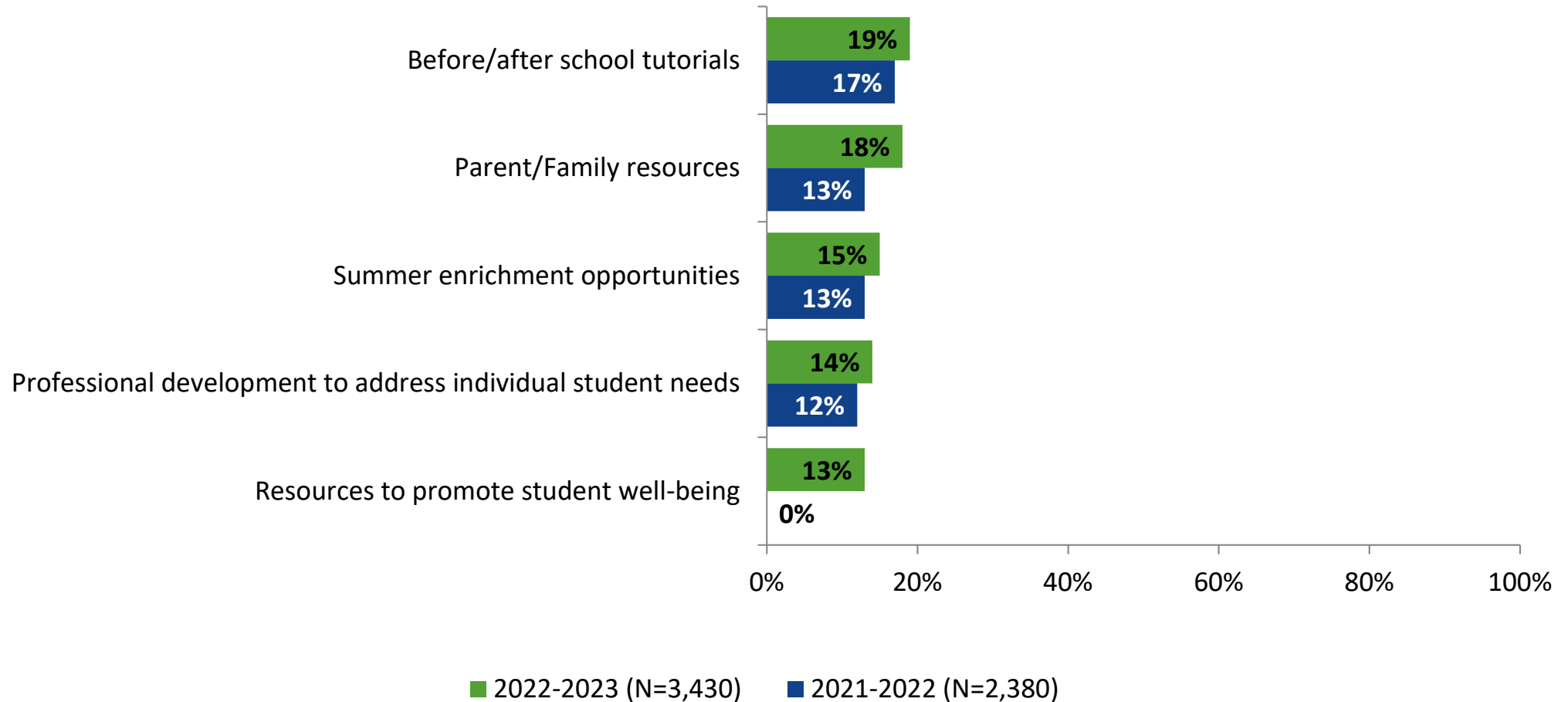
Addressing Learning Loss: Comparison Over Time

Please select up to three strategies that you believe would be most effective in addressing learning loss.



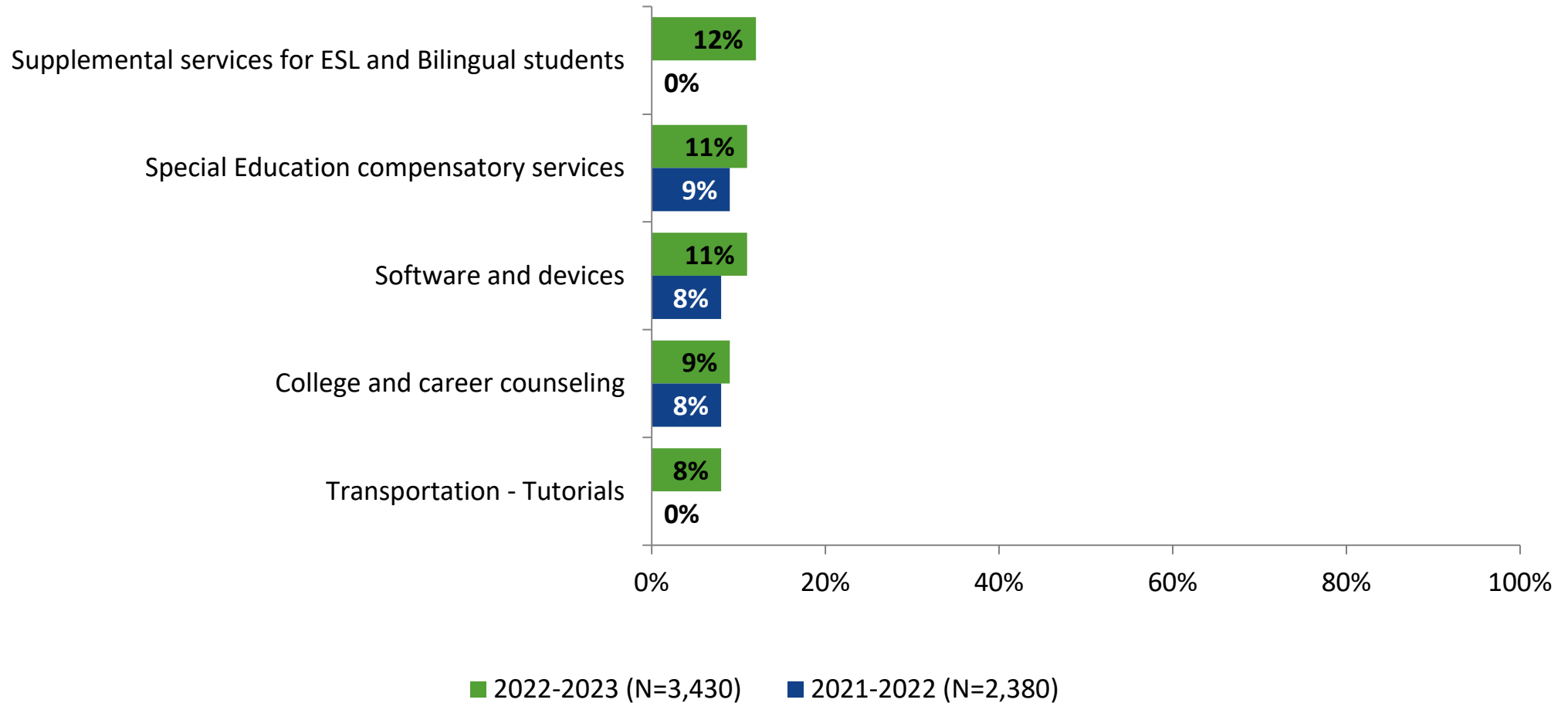
Addressing Learning Loss: Comparison Over Time (Continued)

Please select up to three strategies that you believe would be most effective in addressing learning loss.



Addressing Learning Loss: Comparison Over Time (Continued)

Please select up to three strategies that you believe would be most effective in addressing learning loss.





Follow us on Twitter: @k12insight
www.k12insight.com